

For Research Use Only

NUPL1 Polyclonal antibody

Catalog Number: 19907-1-AP

2 Publications



Basic Information

Catalog Number:

19907-1-AP

Size:

150ul , Concentration: 400 ug/ml by Nanodrop and 227 ug/ml by Bradford method using BSA as the standard;

Source:

Rabbit

Isotype:

IgG

Immunogen Catalog Number:

AG13901

GenBank Accession Number:

BC001104

GeneID (NCBI):

9818

UNIPROT ID:

Q9BVL2

Full Name:

nucleoporin like 1

Calculated MW:

599 aa, 61 kDa

Observed MW:

65 kDa

Purification Method:

Antigen affinity purification

Recommended Dilutions:

WB 1:500-1:3000

Applications

Tested Applications:

WB, ELISA

Cited Applications:

WB

Species Specificity:

human, mouse, rat

Cited Species:

human

Positive Controls:

WB : HepG2 cells, HeLa cells, L02 cells, mouse brain tissue

Notable Publications

Author	Pubmed ID	Journal	Application
Melissa Kane	30084827	Elife	WB
Fani Panagaki	39036650	Nat Phys	WB

Storage

Storage:

Store at -20°C. Stable for one year after shipment.

Storage Buffer:

PBS with 0.02% sodium azide and 50% glycerol pH 7.3.

Aliquoting is unnecessary for -20°C storage

*** 20ul sizes contain 0.1% BSA

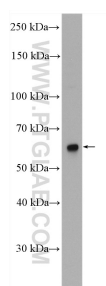
For technical support and original validation data for this product please contact:

T: 1 (888) 4PTGLAB (1-888-478-4522) (toll free in USA), or 1(312) 455-8498 (outside USA)

E: proteintech@ptglab.com
W: ptglab.com

This product is exclusively available under Proteintech Group brand and is not available to purchase from any other manufacturer.

Selected Validation Data



HepG2 cells were subjected to SDS PAGE followed by western blot with 19907-1-AP (NUPL1 antibody) at dilution of 1:1500 incubated at room temperature for 1.5 hours.