

For Research Use Only

# KDM3B Polyclonal antibody

Catalog Number: 19915-1-AP

1 Publications



## Basic Information

Catalog Number:

19915-1-AP

Size:

150ul, Concentration: 500 ug/ml by Nanodrop;

Source:

Rabbit

Isotype:

IgG

Immunogen Catalog Number:

AG13795

GenBank Accession Number:

BC001202

GeneID (NCBI):

51780

UNIPROT ID:

Q7LBC6

Full Name:

lysine (K)-specific demethylase 3B

Calculated MW:

1761 aa, 192 kDa

Observed MW:

192 kDa, 85 kDa

Purification Method:

Antigen affinity purification

Recommended Dilutions:

WB 1:2000-1:12000

IF/ICC 1:50-1:500

## Applications

Tested Applications:

WB, IF/ICC, ELISA

Cited Applications:

WB

Species Specificity:

human, mouse

Cited Species:

human

Positive Controls:

WB : HEK-293 cells, human placenta tissue, HeLa cells, HepG2 cells

IF/ICC : A431 cells,

## Notable Publications

Author	Pubmed ID	Journal	Application
Yuan Li	32778823	Nat Genet	WB

## Storage

Storage:

Store at -20°C. Stable for one year after shipment.

Storage Buffer:

PBS with 0.02% sodium azide and 50% glycerol pH 7.3.

Aliquoting is unnecessary for -20°C storage

\*\*\* 20ul sizes contain 0.1% BSA

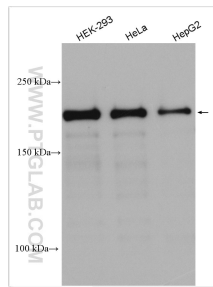
For technical support and original validation data for this product please contact:

T: 1 (888) 4PTGLAB (1-888-478-4522) (toll free in USA), or 1(312) 455-8498 (outside USA)

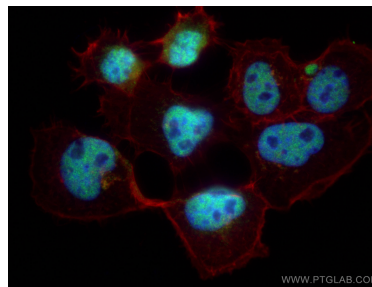
E: [proteintech@ptglab.com](mailto:proteintech@ptglab.com)  
W: [ptglab.com](http://ptglab.com)

This product is exclusively available under Proteintech Group brand and is not available to purchase from any other manufacturer.

## Selected Validation Data



Various lysates were subjected to SDS PAGE followed by western blot with 19915-1-AP (KDM3B antibody) at dilution of 1:6000 incubated at room temperature for 1.5 hours.



Immunofluorescent analysis of (4% PFA) fixed A431 cells using KDM3B antibody (19915-1-AP) at dilution of 1:200 and CoraLite®488-Conjugated Goat Anti-Rabbit IgG(H+L), CL594-Phalloidin (red).