

For Research Use Only

TMEM175 Polyclonal antibody

Catalog Number: 19925-1-AP

Featured Product

18 Publications



Basic Information

Catalog Number: 19925-1-AP	GenBank Accession Number: BC005158	Purification Method: Antigen affinity purification
Size: 150ul , Concentration: 600 ug/ml by Nanodrop;	GeneID (NCBI): 84286	Recommended Dilutions: WB 1:500-1:3000 IHC 1:50-1:500
Source: Rabbit	UNIPROT ID: Q9BSA9	
Isotype: IgG	Full Name: transmembrane protein 175	
Immunogen Catalog Number: AG13890	Calculated MW: 504 aa, 56 kDa	
	Observed MW: 41-45 kDa, 54-60 kDa	

Applications

Tested Applications: WB, IHC, ELISA	Positive Controls: WB : HeLa cells, HEK-293 cells, SH-SY5Y cells, HepG2 cells IHC : mouse brain tissue,
Cited Applications: WB, IF, IP, ColP	
Species Specificity: human, mouse, rat	
Cited Species: human, mouse, rat, monkey	

Note-IHC: suggested antigen retrieval with TE buffer pH 9.0; (*) Alternatively, antigen retrieval may be performed with citrate buffer pH 6.0

Background Information

TMEM175 has two repeats of 6-transmembrane-spanning segments and has no GYG K⁺ channel sequence signature-containing, pore-forming P loop. Lysosomes lacking TMEM175 exhibit no K⁺ conductance, have a markedly depolarized $\Delta\Psi$ and little sensitivity to changes in [K⁺], and have compromised luminal pH stability and abnormal fusion with autophagosomes during autophagy. TMEM175 comprises a K⁺ channel that underlies the molecular mechanism of lysosomal K⁺ permeability. It has two isoforms with MW 41-45 kDa and 54-60 kDa. For optimal WB detection with this antibody, we recommend avoiding boiling the sample after lysis.

Notable Publications

Author	Pubmed ID	Journal	Application
Lynne Krohn	31658403	Ann Neurol	WB
Sarah Jinn	31261387	Hum Mol Genet	WB
Jinhong Wie	33505021	Nature	WB

Storage

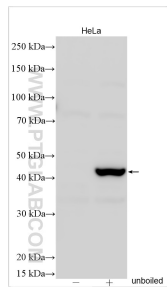
Storage:
Store at -20°C. Stable for one year after shipment.
Storage Buffer:
PBS with 0.02% sodium azide and 50% glycerol pH 7.3.
Aliquoting is unnecessary for -20°C storage

*** 20ul sizes contain 0.1% BSA

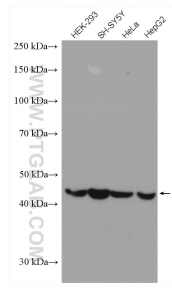
For technical support and original validation data for this product please contact:
T: 1 (888) 4PTGLAB (1-888-478-4522) (toll free in USA), or 1(312) 455-8498 (outside USA)
E: proteintech@ptglab.com
W: ptglab.com

This product is exclusively available under Proteintech Group brand and is not available to purchase from any other manufacturer.

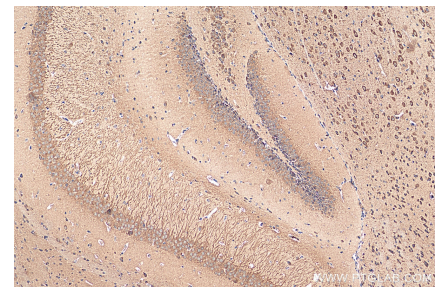
Selected Validation Data



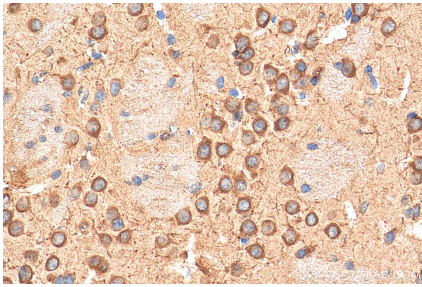
Boiled and unboiled HeLa cell lysates were subjected to SDS PAGE followed by western blot with 19925-1-AP (TMEM175 antibody) at dilution of 1:1500 incubated at room temperature for 1.5 hours.



Various lysates were subjected to SDS PAGE followed by western blot with 19925-1-AP (TMEM175 antibody) at dilution of 1:1500 incubated at room temperature for 1.5 hours.



Immunohistochemical analysis of paraffin-embedded mouse brain tissue slide using 19925-1-AP (TMEM175 antibody) at dilution of 1:200 (under 10x lens). Heat mediated antigen retrieval with Tris-EDTA buffer (pH 9.0).



Immunohistochemical analysis of paraffin-embedded mouse brain tissue slide using 19925-1-AP (TMEM175 antibody) at dilution of 1:200 (under 40x lens). Heat mediated antigen retrieval with Tris-EDTA buffer (pH 9.0).