

For Research Use Only

mGluR1 Polyclonal antibody

Catalog Number: 19955-1-AP

3 Publications



Basic Information

Catalog Number:

19955-1-AP

Size:

150ul, Concentration: 260 ug/ml by Nanodrop and 167 ug/ml by Bradford method using BSA as the standard;

Source:

Rabbit

Isotype:

IgG

GenBank Accession Number:

NM_000838

GeneID (NCBI):

2911

UNIPROT ID:

Q13255

Full Name:

glutamate receptor, metabotropic 1

Calculated MW:

132 kDa

Purification Method:

Antigen affinity purification

Recommended Dilutions:

IHC 1:50-1:500

IF-P 1:50-1:500

Applications

Tested Applications:

IHC, IF-P, ELISA

Species Specificity:

human, mouse

Cited Species:

human

Positive Controls:

IHC: mouse brain tissue,

IF-P: mouse brain tissue,

Note-IHC: suggested antigen retrieval with TE buffer pH 9.0; (*) Alternatively, antigen retrieval may be performed with citrate buffer pH 6.0

Background Information

GRM1, also named as GPRC1A and MGLUR1, belongs to the G-protein coupled receptor 3 family. GRM1 is a receptor for glutamate. The activity of GRM1 is mediated by a G-protein that activates a phosphatidylinositol-calcium second messenger system. It may participate in the central action of glutamate in the CNS, such as long-term potentiation in the hippocampus and long-term depression in the cerebellum. The antibody can recognize isoform1 and isoform2 of GRM1.

Notable Publications

Author	Pubmed ID	Journal	Application
Jee Hyun Yi	32766549	Brain Commun	
Stacey S Willard	23983606	Int J Biol Sci	
Koochekpour Shahriar S	23072969	Clin Cancer Res	

Storage

Storage:

Store at -20°C. Stable for one year after shipment.

Storage Buffer:

PBS with 0.02% sodium azide and 50% glycerol pH 7.3.

Aliquoting is unnecessary for -20°C storage

*** 20ul sizes contain 0.1% BSA

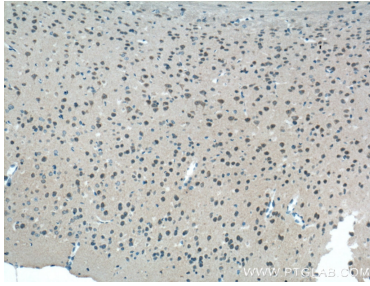
For technical support and original validation data for this product please contact:

T: 1 (888) 4PTGLAB (1-888-478-4522) (toll free in USA), or 1(312) 455-8498 (outside USA)

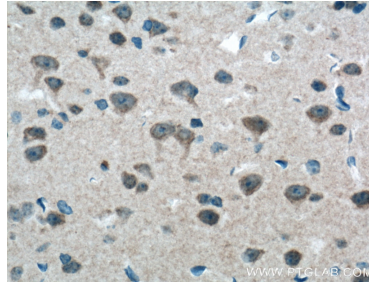
E: proteintech@ptglab.com
W: ptglab.com

This product is exclusively available under Proteintech Group brand and is not available to purchase from any other manufacturer.

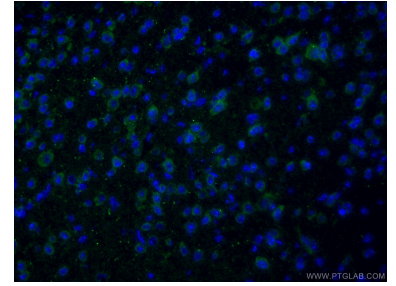
Selected Validation Data



Immunohistochemical analysis of paraffin-embedded mouse brain tissue slide using 19955-1-AP (mGluR1 antibody at dilution of 1:200 (under 10x lens). Heat mediated antigen retrieval with Tris-EDTA buffer (pH 9.0).



Immunohistochemical analysis of paraffin-embedded mouse brain tissue slide using 19955-1-AP (mGluR1 antibody at dilution of 1:200 (under 40x lens). Heat mediated antigen retrieval with Tris-EDTA buffer (pH 9.0).



Immunofluorescent analysis of (4% PFA) fixed mouse brain tissue using 19955-1-AP (mGluR1 antibody) at dilution of 1:50 and Alexa Fluor 488-conjugated Goat Anti-Rabbit IgG(H+L).