

For Research Use Only

# CXorf26 Polyclonal antibody

Catalog Number: 20137-1-AP



## Basic Information

<b>Catalog Number:</b> 20137-1-AP	<b>GenBank Accession Number:</b> BC001220	<b>Purification Method:</b> Antigen affinity purification
<b>Size:</b> 150ul , Concentration: 600 ug/ml by Nanodrop and 367 ug/ml by Bradford method using BSA as the standard;	<b>GeneID (NCBI):</b> 51260	<b>Recommended Dilutions:</b> WB 1:200-1:1000 IHC 1:20-1:200 IF/ICC 1:200-1:800
<b>Source:</b> Rabbit	<b>UNIPROT ID:</b> Q9BVG4	
<b>Isotype:</b> IgG	<b>Full Name:</b> chromosome X open reading frame 26	
<b>Immunogen Catalog Number:</b> AG14089	<b>Calculated MW:</b> 233 aa, 26 kDa	
	<b>Observed MW:</b> 26-35 kDa	

## Applications

<b>Tested Applications:</b> WB, IHC, IF/ICC, ELISA	<b>Positive Controls:</b>
<b>Species Specificity:</b> human, mouse	<b>WB :</b> A549 cells, HeLa cells, mouse lung tissue
<b>Note-IHC:</b> suggested antigen retrieval with <b>TE buffer pH 9.0; (*) Alternatively, antigen retrieval may be performed with citrate buffer pH 6.0</b>	<b>IHC :</b> human testis tissue, human kidney tissue
	<b>IF/ICC :</b> HeLa cells,

## Storage

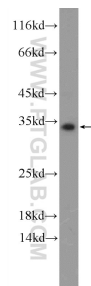
**Storage:**  
Store at -20°C. Stable for one year after shipment.  
**Storage Buffer:**  
PBS with 0.02% sodium azide and 50% glycerol pH 7.3.  
Aliquoting is unnecessary for -20°C storage

\*\*\* 20ul sizes contain 0.1% BSA

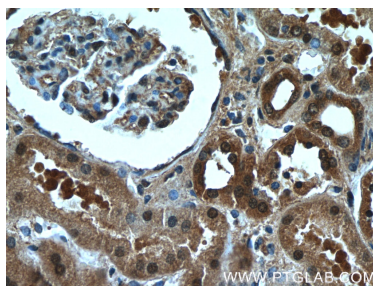
For technical support and original validation data for this product please contact:  
T: 1 (888) 4PTGLAB (1-888-478-4522) (toll free in USA), or 1(312) 455-8498 (outside USA)  
E: [proteintech@ptglab.com](mailto:proteintech@ptglab.com)  
W: [ptglab.com](http://ptglab.com)

This product is exclusively available under Proteintech Group brand and is not available to purchase from any other manufacturer.

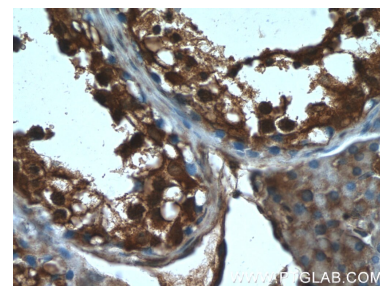
## Selected Validation Data



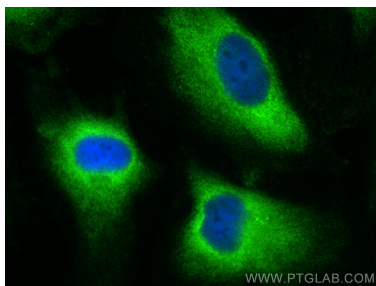
A549 cells were subjected to SDS PAGE followed by western blot with 20137-1-AP (CXorf26 Antibody) at dilution of 1:300 incubated at room temperature for 1.5 hours.



Immunohistochemical analysis of paraffin-embedded human kidney tissue slide using 20137-1-AP (CXorf26 Antibody) at dilution of 1:50 (under 40x lens).



Immunohistochemical analysis of paraffin-embedded human testis tissue slide using 20137-1-AP (CXorf26 Antibody) at dilution of 1:50 (under 40x lens).



Immunofluorescent analysis of (-20°C Ethanol) fixed HeLa cells using CXorf26 antibody (20137-1-AP) at dilution of 1:400 and CoraLite®488-Conjugated Goat Anti-Rabbit IgG(H+L) (SA00013-2).