

For Research Use Only

SLC25A23 Polyclonal antibody

Catalog Number: 20168-1-AP

1 Publications



Basic Information

Catalog Number:

20168-1-AP

Size:

150ul, Concentration: 1200 ug/ml by Nanodrop and 593 ug/ml by Bradford method using BSA as the standard;

Source:

Rabbit

Isotype:

IgG

Immunogen Catalog Number:

AG13987

GenBank Accession Number:

BC001656

GeneID (NCBI):

79085

UNIPROT ID:

Q9BV35

Full Name:

solute carrier family 25 (mitochondrial carrier; phosphate carrier), member 23

Calculated MW:

468 aa, 52 kDa

Observed MW:

49-54 kDa

Purification Method:

Antigen affinity purification

Recommended Dilutions:

WB: 1:1000-1:4000

Applications

Tested Applications:

WB, ELISA

Cited Applications:

IHC

Species Specificity:

human, mouse, rat

Cited Species:

human

Positive Controls:

WB: mouse pancreas tissue, mouse skeletal muscle tissue, mouse testis tissue, SH-SY5Y cells

Background Information

SLC25A23 gene encodes a 468 amino acids polypeptide, named SCaMC-3, with a bipartite structure typical of calcium-binding mitochondrial solute carrier (CaMSC) proteins. The amino-terminal portion harbors three canonical EF-hand calcium-binding domains while the carboxyl-terminal portion of SCaMC-3 has the characteristic features of the mitochondrial solute carrier (MSC) superfamily. Northern blot analysis reveals the presence of the transcript in brain, heart, skeletal muscle, liver and small intestine. The SLC25A23 gene undergoes alternative splicing suggesting a modular nature of the encoded product. Three out of four putative protein isoforms lack a significant portion of the third mitochondrial carrier signature. The most common SCaMC-3 isoform shows a mitochondrial subcellular localization when transfected in HeLa cells and is able to bind calcium by Ca²⁺ dependent mobility shift assays. (PMID: 15716113)

Notable Publications

Author	Pubmed ID	Journal	Application
Ao-ran Liu	36254139	Biomed Res Int	IHC

Storage

Storage:

Store at -20°C. Stable for one year after shipment.

Storage Buffer:

PBS with 0.02% sodium azide and 50% glycerol, pH7.3

Aliquoting is unnecessary for -20°C storage

*** 20ul sizes contain 0.1% BSA

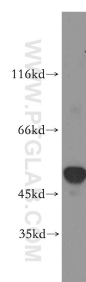
For technical support and original validation data for this product please contact:

T: 1 (888) 4PTGLAB (1-888-478-4522) (toll free in USA), or 1(312) 455-8498 (outside USA)

E: proteintech@ptglab.com
W: ptglab.com

This product is exclusively available under Proteintech Group brand and is not available to purchase from any other manufacturer.

Selected Validation Data



mouse pancreas tissue were subjected to SDS PAGE followed by western blot with 20168-1-AP (SLC25A23 antibody) at dilution of 1:1000 incubated at room temperature for 1.5 hours.