

For Research Use Only

STEAP2 Polyclonal antibody

Catalog Number: 20201-1-AP

Featured Product

4 Publications



Basic Information

Catalog Number:

20201-1-AP

Size:

150ul, Concentration: 600 ug/ml by Nanodrop;

Source:

Rabbit

Isotype:

IgG

GenBank Accession Number:

NM_152999

GeneID (NCBI):

261729

UNIPROT ID:

Q8NFT2

Full Name:

six transmembrane epithelial antigen of the prostate 2

Calculated MW:

56 kDa

Observed MW:

48-52 kDa

Purification Method:

Antigen affinity purification

Recommended Dilutions:

WB 1:500-1:1000

Applications

Tested Applications:

WB, ELISA

Cited Applications:

WB, IHC

Species Specificity:

human, mouse

Cited Species:

human, mouse

Positive Controls:

WB : HEK-293 cells, HeLa cells, DU 145 cells, fetal human brain tissue, mouse kidney tissue

Background Information

STEAP2, also named as PCANAP1 and STAMP1, belongs to the STEAP family. It is a metalloredutase that has the ability to reduce both Fe³⁺ to Fe²⁺ and Cu²⁺ to Cu¹⁺. STEAP2 uses NAD⁺ as acceptor. The antibody is specific to STEAP2.

Notable Publications

Author	Pubmed ID	Journal	Application
Dong Zhang	36316642	Cancer Biol Ther	WB
Haruki Hasegawa	29940176	Exp Cell Res	WB
Yue Zhu	35436987	Cell Death Dis	WB,IHC

Storage

Storage:

Store at -20°C. Stable for one year after shipment.

Storage Buffer:

PBS with 0.02% sodium azide and 50% glycerol pH 7.3.

Aliquoting is unnecessary for -20°C storage

*** 20ul sizes contain 0.1% BSA

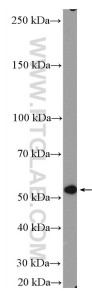
For technical support and original validation data for this product please contact:

T: 1 (888) 4PTGLAB (1-888-478-4522) (toll free in USA), or 1(312) 455-8498 (outside USA)

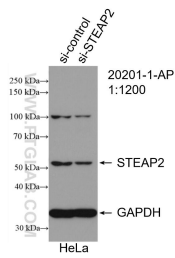
E: proteintech@ptglab.com
W: ptglab.com

This product is exclusively available under Proteintech Group brand and is not available to purchase from any other manufacturer.

Selected Validation Data



HEK-293 cells were subjected to SDS PAGE followed by western blot with 20201-1-AP (STEAP2-Specific antibody) at dilution of 1:600 incubated at room temperature for 1.5 hours.



WB result of STEAP2-Specific antibody (20201-1-AP; 1:600; incubated at room temperature for 1.5 hours) with sh-Control and sh-STEAP2-Specific transfected HeLa cells.