

For Research Use Only

EPHA6-Specific Polyclonal antibody

Catalog Number: 20211-1-AP



Basic Information

Catalog Number: 20211-1-AP	GenBank Accession Number: NM_001080448	Purification Method: Antigen affinity purification
Size: 150ul , Concentration: 200 µg/ml by Nanodrop and 173 µg/ml by Bradford method using BSA as the standard;	GeneID (NCBI): 285220	Recommended Dilutions: IHC 1:20-1:200
Source: Rabbit	Full Name: EPH receptor A6	
Isotype: IgG	Calculated MW: 116 kDa	

Applications

Tested Applications: IHC, ELISA	Positive Controls: IHC : mouse brain tissue,
Species Specificity: human, mouse, rat	
Note-IHC: suggested antigen retrieval with TE buffer pH 9.0; (*) Alternatively, antigen retrieval may be performed with citrate buffer pH 6.0	

Background Information

EPHA6, also named as EHK2, belongs to the protein kinase superfamily, Tyr protein kinase family and Ephrin receptor subfamily. It is a receptor for members of the ephrin-A family. EPHA6 catalyzes the reaction: ATP + a [protein]-L-tyrosine = ADP + a [protein]-L-tyrosine phosphate. This antibody is specific to EPHA6.

Storage

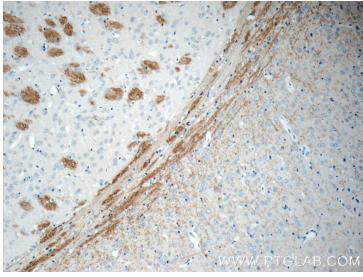
Storage:
Store at -20°C. Stable for one year after shipment.
Storage Buffer:
PBS with 0.02% sodium azide and 50% glycerol pH 7.3.
Aliquoting is unnecessary for -20°C storage

*** 20ul sizes contain 0.1% BSA

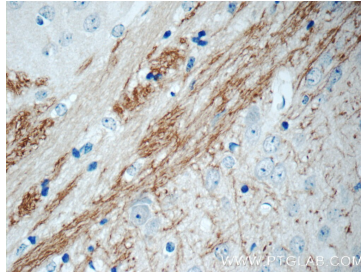
For technical support and original validation data for this product please contact:
T: 1 (888) 4PTGLAB (1-888-478-4522) (toll free in USA), or 1(312) 455-8498 (outside USA) E: proteintech@ptglab.com
W: ptglab.com

This product is exclusively available under Proteintech Group brand and is not available to purchase from any other manufacturer.

Selected Validation Data



Immunohistochemical analysis of paraffin-embedded mouse brain tissue slide using 20211-1-AP (EPHA6-Specific Antibody) at dilution of 1:50 (under 10x lens).



Immunohistochemical analysis of paraffin-embedded mouse brain tissue slide using 20211-1-AP (EPHA6-Specific Antibody) at dilution of 1:50 (under 40x lens).