

For Research Use Only

IGF1B-Specific Polyclonal antibody

Catalog Number: 20215-1-AP

Featured Product

15 Publications



Basic Information

Catalog Number: 20215-1-AP	GenBank Accession Number: NM_001111285	Purification Method: Antigen affinity purification
Size: 150ul, Concentration: 700 ug/ml by Nanodrop and 440 ug/ml by Bradford method using BSA as the standard;	GeneID (NCBI): 3479	Recommended Dilutions: IHC 1:50-1:500 IF-P 1:50-1:500
Source: Rabbit	UNIPROT ID: P05019	
Isotype: IgG	Full Name: insulin-like growth factor 1 (somatomedin C)	
	Calculated MW: 22 kDa	

Applications

Tested Applications: IHC, IF-P, ELISA	Positive Controls: IHC: human liver cancer tissue, human lung cancer tissue, mouse liver tissue IF-P: mouse liver tissue,
Cited Applications: IHC, IF, Dot blot	
Species Specificity: human, mouse	
Cited Species: human, mouse, rat, chicken	

Note-IHC: suggested antigen retrieval with TE buffer pH 9.0; (*) Alternatively, antigen retrieval may be performed with citrate buffer pH 6.0

Background Information

IGF1B, also named as IBP1, MGF, IGF-I and Somatomedin-C, belongs to the INS family. IGF1 is structurally and functionally related to INS but have a much higher growth-promoting activity. Altered expression or mutation of IGF-1 is associated with several human disorders, including type I diabetes and various forms of cancer. Defects in IGF1 are the cause of INS-like growth factor I deficiency (IGF1 deficiency) which is an autosomal recessive disorder characterized by growth retardation, sensorineural deafness and mental retardation. The antibody is specific to isoform IGF-1B.

Notable Publications

Author	Pubmed ID	Journal	Application
Stanley B DeVore	29987187	Mol Cell Biol	
Ni Zeng	31520740	Toxicol In Vitro	
Xiaodong Pei	30452899	Chem Biol Interact	

Storage

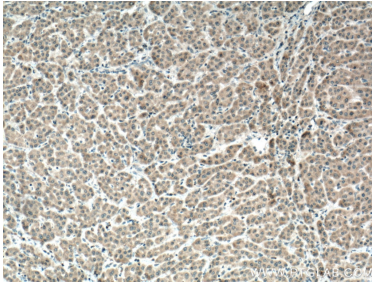
Storage:
Store at -20°C. Stable for one year after shipment.
Storage Buffer:
PBS with 0.02% sodium azide and 50% glycerol pH 7.3.
Aliquoting is unnecessary for -20°C storage

*** 20ul sizes contain 0.1% BSA

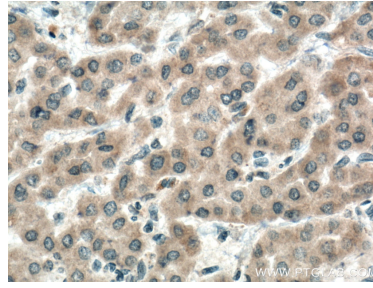
For technical support and original validation data for this product please contact:
T: 1 (888) 4PTGLAB (1-888-478-4522) (toll free in USA), or 1(312) 455-8498 (outside USA)
E: proteintech@ptglab.com
W: ptglab.com

This product is exclusively available under Proteintech Group brand and is not available to purchase from any other manufacturer.

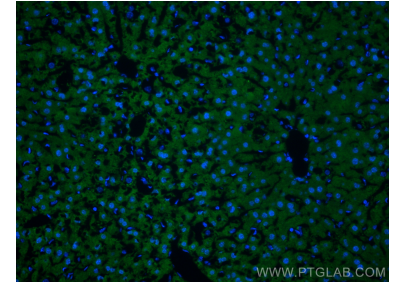
Selected Validation Data



Immunohistochemical analysis of paraffin-embedded human liver cancer tissue slide using 20215-1-AP (IGF1B-Specific antibody) at dilution of 1:200 (under 10x lens. Heat mediated antigen retrieval with Tris-EDTA buffer (pH 9.0)).



Immunohistochemical analysis of paraffin-embedded human liver cancer tissue slide using 20215-1-AP (IGF1B-Specific antibody) at dilution of 1:200 (under 40x lens. Heat mediated antigen retrieval with Tris-EDTA buffer (pH 9.0)).



Immunofluorescent analysis of (4% PFA) fixed mouse liver tissue using IGF1B-Specific antibody (20215-1-AP) at dilution of 1:200 and CoraLite®488-Conjugated Goat Anti-Rabbit IgG(H+L).