

For Research Use Only

# PPP1R11-Specific Polyclonal antibody

Catalog Number: 20263-1-AP

1 Publications



## Basic Information

Catalog Number:

20263-1-AP

Size:

150ul, Concentration: 133 ug/ml by Nanodrop and 133 ug/ml by Bradford method using BSA as the standard;

Source:

Rabbit

Isotype:

IgG

GenBank Accession Number:

NM\_021959

GeneID (NCBI):

6992

UNIPROT ID:

O60927

Full Name:

protein phosphatase 1, regulatory (inhibitor) subunit 11

Calculated MW:

14 kDa

Observed MW:

25-30 kDa

Purification Method:

Antigen affinity purification

Recommended Dilutions:

WB 1:200-1:1000

## Applications

Tested Applications:

WB, ELISA

Cited Applications:

WB

Species Specificity:

human, mouse

Cited Species:

pig

Positive Controls:

WB : HeLa cells, A431 cells, mouse liver tissue

## Background Information

PPP1R11, also named as HCGV and TCTE5, is an inhibitor of protein phosphatase 1. The antibody is specific to PPP1R11.

## Notable Publications

Author	Pubmed ID	Journal	Application
Guisheng Liu	31014175	Cell Cycle	WB

## Storage

Storage:

Store at -20°C. Stable for one year after shipment.

Storage Buffer:

PBS with 0.02% sodium azide and 50% glycerol pH 7.3.

Aliquoting is unnecessary for -20°C storage

\*\*\* 20ul sizes contain 0.1% BSA

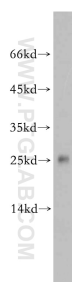
For technical support and original validation data for this product please contact:

T: 1 (888) 4PTGLAB (1-888-478-4522) (toll free in USA), or 1(312) 455-8498 (outside USA)

E: [proteintech@ptglab.com](mailto:proteintech@ptglab.com)  
W: [ptglab.com](http://ptglab.com)

This product is exclusively available under Proteintech Group brand and is not available to purchase from any other manufacturer.

## Selected Validation Data



HeLa cells were subjected to SDS PAGE followed by western blot with 20263-1-AP (PPP1R11-Specific antibody) at dilution of 1:100 incubated at room temperature for 1.5 hours.