

For Research Use Only

Tetranectin Polyclonal antibody

Catalog Number: 20311-1-AP



Basic Information

Catalog Number:

20311-1-AP

Size:

150ul, Concentration: 450 ug/ml by Nanodrop and 253 ug/ml by Bradford method using BSA as the standard;

Source:

Rabbit

Isotype:

IgG

Immunogen Catalog Number:

AG14147

GenBank Accession Number:

BC011024

GeneID (NCBI):

7123

UNIPROT ID:

P05452

Full Name:

C-type lectin domain family 3, member B

Calculated MW:

202 aa, 22 kDa

Observed MW:

22 kDa

Purification Method:

Antigen affinity purification

Recommended Dilutions:

WB 1:500-1:1000

IP 0.5-4.0 ug for 1.0-3.0 mg of total protein lysate

IF/ICC 1:200-1:800

Applications

Tested Applications:

WB, IF/ICC, IP, ELISA

Species Specificity:

human

Positive Controls:

WB : human plasma tissue,

IP : human plasma tissue,

IF/ICC : HeLa cells,

Background Information

C-Type Lectin Domain Family 3 Member B (CLEC3B) is a transmembrane Ca²⁺-binding protein, locating in cell plasma, extracellular matrix and exosomes. Downregulation of CLEC3B has been reported in various diseases. It was demonstrated in CLEC3B-deficient mice that the absence of CLEC3B impeded the mineralization process in osteogenesis. (PMID: 31477130)

Storage

Storage:

Store at -20°C. Stable for one year after shipment.

Storage Buffer:

PBS with 0.02% sodium azide and 50% glycerol pH 7.3.

Aliquoting is unnecessary for -20°C storage

*** 20ul sizes contain 0.1% BSA

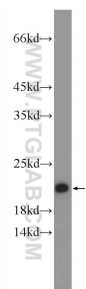
For technical support and original validation data for this product please contact:

T: 1 (888) 4PTGLAB (1-888-478-4522) (toll free in USA), or 1(312) 455-8498 (outside USA)

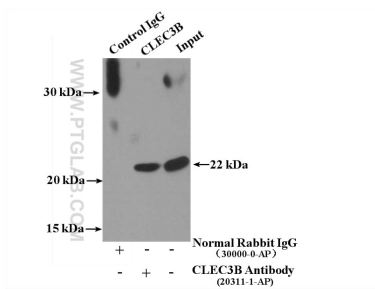
E: proteintech@ptglab.com
W: ptglab.com

This product is exclusively available under Proteintech Group brand and is not available to purchase from any other manufacturer.

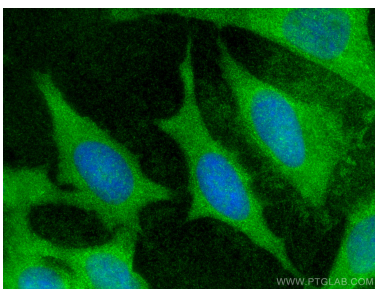
Selected Validation Data



human plasma were subjected to SDS PAGE followed by western blot with 20311-1-AP (CLEC3B Antibody) at dilution of 1:600 incubated at room temperature for 1.5 hours.



IP result of anti-CLEC3B (IP:20311-1-AP, 4ug; Detection:20311-1-AP 1:300) with human plasma lysate 4000ug.



Immunofluorescent analysis of (-20°C Methanol) fixed HeLa cells using CLEC3B antibody (20311-1-AP) at dilution of 1:400 and CoraLite®488-Conjugated AffiniPure Goat Anti-Rabbit IgG(H+L).