

For Research Use Only

# GBE1 Polyclonal antibody

Catalog Number: 20313-1-AP

Featured Product

10 Publications



## Basic Information

### Catalog Number:

20313-1-AP

### Size:

150ul, Concentration: 550 ug/ml by Nanodrop;

### Source:

Rabbit

### Isotype:

IgG

### Immunogen Catalog Number:

AG14154

### GenBank Accession Number:

BC012098

### GeneID (NCBI):

2632

### UNIPROT ID:

Q04446

### Full Name:

glucan (1,4-alpha-), branching enzyme 1

### Calculated MW:

702 aa, 80 kDa

### Observed MW:

72 kDa

### Purification Method:

Antigen affinity purification

### Recommended Dilutions:

WB 1:1000-1:6000

IP 0.5-4.0 ug for 1.0-3.0 mg of total protein lysate

IF/ICC 1:200-1:800

## Applications

### Tested Applications:

WB, IF/ICC, IP, ELISA

### Cited Applications:

WB

### Species Specificity:

human, mouse, rat

### Cited Species:

human, mouse, rat

### Positive Controls:

WB: L02 cells, human skeletal muscle tissue, mouse liver tissue, rat liver tissue

IP: L02 cells,

IF/ICC: HeLa cells,

## Background Information

GBE1 (glucan (1,4-alpha-), branching enzyme 1) is essential for the globular and branched structure of glycogen, increasing solubility by creating a hydrophilic surface and reducing intracellular osmotic pressure. It may serve as a potential therapeutic target for treating LUAD (PMID: 31221150). The full sequence can be further processed into a mature form of 75 kDa.

## Notable Publications

Author	Pubmed ID	Journal	Application
Dominika Malinska	33049291	Arch Biochem Biophys	WB
Hui Hui Wong	34038740	Am J Hum Genet	WB
Jingzi Zhang	32105074	J Proteome Res	WB

## Storage

### Storage:

Store at -20°C. Stable for one year after shipment.

### Storage Buffer:

PBS with 0.02% sodium azide and 50% glycerol, pH7.3

Aliquoting is unnecessary for -20°C storage

\*\*\* 20ul sizes contain 0.1% BSA

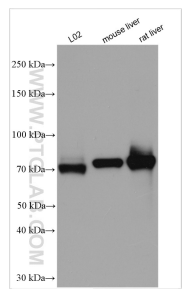
For technical support and original validation data for this product please contact:

T: 1 (888) 4PTGLAB (1-888-478-4522) (toll free in USA), or 1(312) 455-8498 (outside USA)

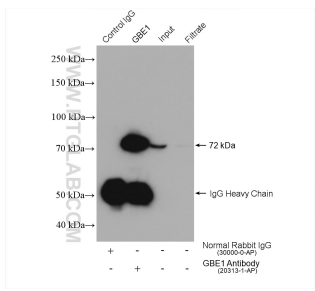
E: [proteintech@ptglab.com](mailto:proteintech@ptglab.com)  
W: [ptglab.com](http://ptglab.com)

This product is exclusively available under Proteintech Group brand and is not available to purchase from any other manufacturer.

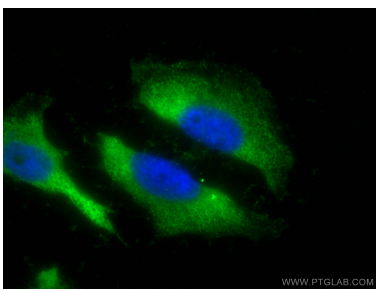
Selected Validation Data



Various lysates were subjected to SDS PAGE followed by western blot with 20313-1-AP (GBE1 antibody) at dilution of 1:3000 incubated at room temperature for 1.5 hours.



IP result of anti-GBE1 (IP:20313-1-AP, 4ug; Detection:20313-1-AP 1:2000) with L02 cells lysate 1360 ug.



Immunofluorescent analysis of (-20°C Ethanol) fixed HeLa cells using GBE1 antibody (20313-1-AP) at dilution of 1:400 and CoraLite®488-Conjugated Goat Anti-Rabbit IgG(H+L).