

For Research Use Only

Adenosine A1 Receptor Polyclonal antibody

Catalog Number: 20332-1-AP

3 Publications



Basic Information

Catalog Number:

20332-1-AP

Size:

150ul, Concentration: 400 ug/ml by Nanodrop;

Source:

Rabbit

Isotype:

IgG

Immunogen Catalog Number:

AG14092

GenBank Accession Number:

BC026340

GeneID (NCBI):

134

UNIPROT ID:

P30542

Full Name:

adenosine A1 receptor

Calculated MW:

326 aa, 37 kDa

Observed MW:

39 kDa

Purification Method:

Antigen affinity purification

Recommended Dilutions:

WB 1:500-1:1000

IHC 1:50-1:500

Applications

Tested Applications:

WB, IHC, FC (Intra), ELISA

Cited Applications:

WB, IHC, IF, FC (Intra)

Species Specificity:

human, mouse

Cited Species:

human, mouse

Note-IHC: suggested antigen retrieval with TE buffer pH 9.0; (*) Alternatively, antigen retrieval may be performed with citrate buffer pH 6.0

Positive Controls:

WB : mouse eye tissue,

IHC : mouse brain tissue, mouse cerebellum tissue

Background Information

ADORA1, also named as RDC7, is a receptor for adenosine. It is mediated by G proteins which inhibit adenylyl cyclase. Adenosine is an important mediator of ethanol intoxication and exerts some of its effects via ADORA1 in the central nervous system.

Notable Publications

Author	Pubmed ID	Journal	Application
Hu Guo	39430133	J Orthop Translat	WB,IF
Chuanxin Zhang	39060559	Cell Biol Toxicol	IHC
Linya Wang	38837964	PLoS One	

Storage

Storage:

Store at -20°C. Stable for one year after shipment.

Storage Buffer:

PBS with 0.02% sodium azide and 50% glycerol pH 7.3.

Aliquoting is unnecessary for -20°C storage

*** 20ul sizes contain 0.1% BSA

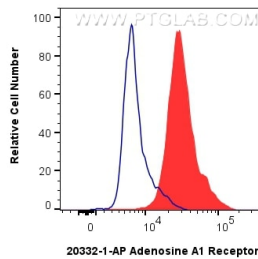
For technical support and original validation data for this product please contact:

T: 1 (888) 4PTGLAB (1-888-478-4522) (toll free in USA), or 1(312) 455-8498 (outside USA)

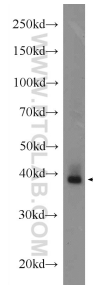
E: proteintech@ptglab.com
W: ptglab.com

This product is exclusively available under Proteintech Group brand and is not available to purchase from any other manufacturer.

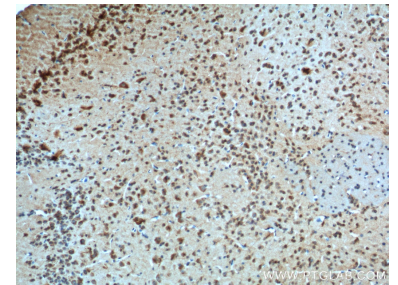
Selected Validation Data



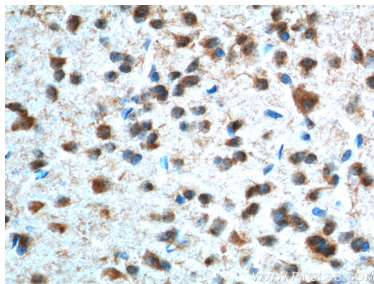
1x10⁶ SH-SY5Y cells were intracellularly stained with 0.4 ug Adenosine A1 Receptor Polyclonal antibody (20332-1-AP) and CoraLite® 488-Conjugated AffiniPure Goat Anti-Rabbit IgG(H+L) (SA00013-2)(red), or 0.4 ug Rabbit IgG control Rabbit PolyAb (30000-O-AP) (blue). Cells were fixed with 4% PFA and permeabilized with Flow Cytometry Perm Buffer (PF00011-C).



mouse eye tissue were subjected to SDS PAGE followed by western blot with 20332-1-AP (Adenosine A1 Receptor antibody at dilution of 1:600 incubated at room temperature for 1.5 hours.



Immunohistochemical analysis of paraffin-embedded mouse brain tissue slide using 20332-1-AP (Adenosine A1 Receptor antibody at dilution of 1:100 (under 10x lens). Heat mediated antigen retrieval with Tris-EDTA buffer (pH 9.0).



Immunohistochemical analysis of paraffin-embedded mouse brain tissue slide using 20332-1-AP (Adenosine A1 Receptor antibody at dilution of 1:100 (under 40x lens). Heat mediated antigen retrieval with Tris-EDTA buffer (pH 9.0).