

For Research Use Only

# APJ/APLNR Polyclonal antibody

Catalog Number: 20341-1-AP

Featured Product

44 Publications



## Basic Information

Catalog Number:

20341-1-AP

Size:

150ul, Concentration: 1900 ug/ml by 187

Nanodrop;

Source:

Rabbit

Isotype:

IgG

Immunogen Catalog Number:

AG14138

GenBank Accession Number:

BC032688

GeneID (NCBI):

187

UNIPROT ID:

P35414

Full Name:

apelin receptor

Calculated MW:

380 aa, 43 kDa

Observed MW:

43 kDa

Purification Method:

Antigen affinity purification

Recommended Dilutions:

WB 1:500-1:1000

## Applications

Tested Applications:

WB, ELISA

Cited Applications:

WB, IHC, IF

Species Specificity:

human, mouse

Cited Species:

human, mouse, rat, rabbit

Positive Controls:

WB: SH-SY5Y cells,

## Background Information

APJ, also named APLNR and AGTRL1, belongs to the G-protein coupled receptor 1 family. It is a receptor for apelin coupled to G proteins that inhibit adenylate cyclase activity. APJ is an alternative coreceptor with CD4 for HIV-1 infection. It may be involved in the development of AIDS dementia. APJ is expressed abundantly in the corpus callosum and spinal cord.

## Notable Publications

| Author      | Pubmed ID | Journal                    | Application |
|-------------|-----------|----------------------------|-------------|
| Yong Chen   | 36224027  | Front Biosci (Landmark Ed) | WB          |
| Qianyi Chen | 36243122  | J Invest Dermatol          | IF, IHC, WB |
| Ke Song     | 36443325  | Nat Commun                 | WB          |

## Storage

Storage:

Store at -20°C. Stable for one year after shipment.

Storage Buffer:

PBS with 0.02% sodium azide and 50% glycerol, pH7.3

Aliquoting is unnecessary for -20°C storage

\*\*\* 20ul sizes contain 0.1% BSA

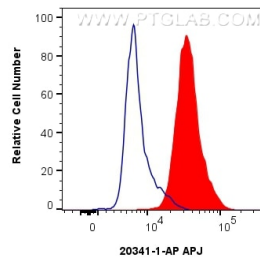
For technical support and original validation data for this product please contact:

T: 1 (888) 4PTGLAB (1-888-478-4522) (toll free in USA), or 1(312) 455-8498 (outside USA)

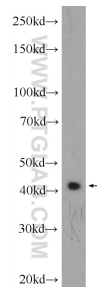
E: [proteintech@ptglab.com](mailto:proteintech@ptglab.com)  
W: [ptglab.com](http://ptglab.com)

This product is exclusively available under Proteintech Group brand and is not available to purchase from any other manufacturer.

## Selected Validation Data



$1 \times 10^6$  SH-SY5Y cells were intracellularly stained with 0.4  $\mu$ g APJ Polyclonal antibody (20341-1-AP) and CoraLite®488-Conjugated AffiniPure Goat Anti-Rabbit IgG(H+L) (SA00013-2)(red), or 0.4  $\mu$ g Rabbit IgG control Rabbit PolyAb (30000-O-AP) (blue). Cells were fixed with 4% PFA and permeabilized with Flow Cytometry Perm Buffer (PF00011-C).



SH-SY5Y cells were subjected to SDS PAGE followed by western blot with 20341-1-AP (APJ) antibody at dilution of 1:600 incubated at room temperature for 1.5 hours.