

For Research Use Only

SMEK2 Polyclonal antibody

Catalog Number: 20348-1-AP

1 Publications



Basic Information

Catalog Number: 20348-1-AP	GenBank Accession Number: BC060855	Purification Method: Antigen affinity purification
Size: 150ul , Concentration: 800 µg/ml by Nanodrop and 433 µg/ml by Bradford method using BSA as the standard;	GeneID (NCBI): 57223	Recommended Dilutions: WB 1:500-1:3000 IHC 1:20-1:200 IF 1:20-1:200
Source: Rabbit	Full Name: SMEK homolog 2, suppressor of mek1 (Dictyostelium)	
Isotype: IgG	Calculated MW: 849 aa, 97 kDa	
Immunogen Catalog Number: AG14156	Observed MW: 94-97 kDa, 87 kDa	

Applications

Tested Applications: IF, IHC, WB, ELISA	Positive Controls:
Cited Applications: WB	WB : HEK-293 cells, A2780 cells, HeLa cells, MCF-7 cells
Species Specificity: human, mouse, rat	IHC : human cervical cancer tissue,
Cited Species: human	IF : HEK-293 cells,

Note-IHC: suggested antigen retrieval with TE buffer pH 9.0; (*) Alternatively, antigen retrieval may be performed with citrate buffer pH 6.0

Background Information

Notable Publications

Author	Pubmed ID	Journal	Application
Shujuan Tong	32565934	Oncol Lett	WB

Storage

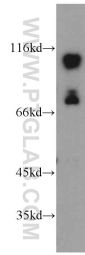
Storage:
Store at -20°C. Stable for one year after shipment.
Storage Buffer:
PBS with 0.02% sodium azide and 50% glycerol pH 7.3.
Aliquoting is unnecessary for -20°C storage

*** 20ul sizes contain 0.1% BSA

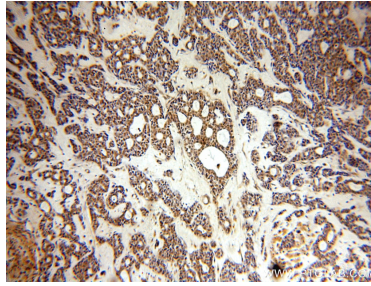
For technical support and original validation data for this product please contact:
T: 1 (888) 4PTGLAB (1-888-478-4522) (toll free in USA), or 1(312) 455-8498 (outside USA) E: proteintech@ptglab.com W: ptglab.com

This product is exclusively available under Proteintech Group brand and is not available to purchase from any other manufacturer.

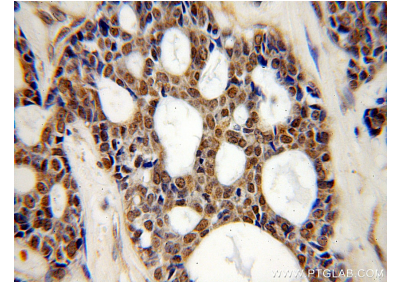
Selected Validation Data



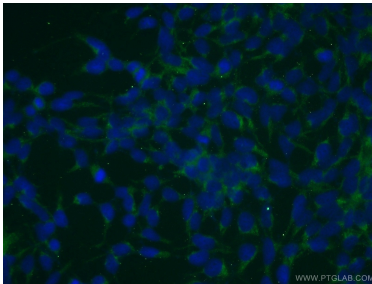
HEK-293 cells were subjected to SDS PAGE followed by western blot with 20348-1-AP (SMEK2 antibody) at dilution of 1:500 incubated at room temperature for 1.5 hours.



Immunohistochemical analysis of paraffin-embedded human cervical cancer using 20348-1-AP (SMEK2 antibody) at dilution of 1:100 (under 10x lens).



Immunohistochemical analysis of paraffin-embedded human cervical cancer using 20348-1-AP (SMEK2 antibody) at dilution of 1:100 (under 40x lens).



Immunofluorescent analysis of (-20°C Ethanol) fixed HEK-293 cells using 20348-1-AP (SMEK2 antibody) at dilution of 1:50 and Alexa Fluor 488-conjugated AffiniPure Goat Anti-Rabbit IgG(H+L).