

For Research Use Only

MYOM1-Specific Polyclonal antibody

Catalog Number: 20360-1-AP

5 Publications



Basic Information

Catalog Number:

20360-1-AP

Size:

150ul, Concentration: 600 ug/ml by Nanodrop;

Source:

Rabbit

Isotype:

IgG

GenBank Accession Number:

NM_003803

GeneID (NCBI):

8736

UNIPROT ID:

P52179

Full Name:

myomesin 1, 185kDa

Calculated MW:

188 kDa

Observed MW:

190 kDa

Purification Method:

Antigen affinity purification

Recommended Dilutions:

WB 1:1000-1:4000

IHC 1:20-1:200

IF-P 1:50-1:500

IF/ICC 1:50-1:500

Applications

Tested Applications:

WB, IHC, IF/ICC, IF-P, ELISA

Cited Applications:

WB, IHC, RIP, IF

Species Specificity:

human, mouse, rat

Cited Species:

mouse, rat

Note-IHC: suggested antigen retrieval with TE buffer pH 9.0; (*) Alternatively, antigen retrieval may be performed with citrate buffer pH 6.0

Positive Controls:

WB : mouse heart tissue, mouse skeletal muscle tissue, rat heart tissue, rat skeletal muscle tissue

IHC : human skeletal muscle tissue, human heart tissue

IF-P : mouse skeletal muscle tissue, mouse heart tissue

IF/ICC : C2C12 cells,

Background Information

MYOM1 is a major component of the vertebrate myofibrillar M band. MYOM1 binds myosin, titin, and light meromyosin. This binding is dose-dependent. The antibody is specific to MYOM1.

Notable Publications

Author	Pubmed ID	Journal	Application
Kosmas Kosmas	36142826	Int J Mol Sci	IF
Xiaoli Zhang, Ze	34622152	iScience	WB, RIP
Catarina Rippe	28465505	Sci Rep	WB

Storage

Storage:

Store at -20°C. Stable for one year after shipment.

Storage Buffer:

PBS with 0.02% sodium azide and 50% glycerol, pH7.3

Aliquoting is unnecessary for -20°C storage

*** 20ul sizes contain 0.1% BSA

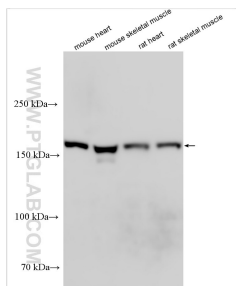
For technical support and original validation data for this product please contact:

T: 1 (888) 4PTGLAB (1-888-478-4522) (toll free in USA), or 1(312) 455-8498 (outside USA)

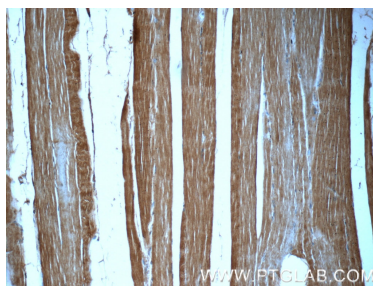
E: proteintech@ptglab.com
W: ptglab.com

This product is exclusively available under Proteintech Group brand and is not available to purchase from any other manufacturer.

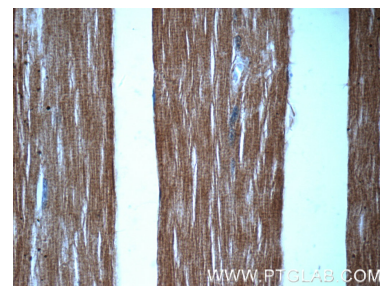
Selected Validation Data



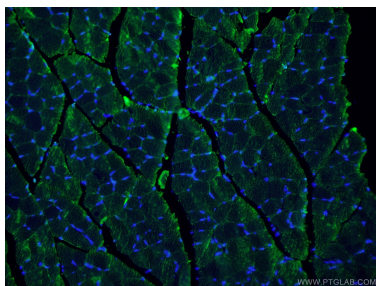
Various lysates were subjected to SDS PAGE followed by western blot with 20360-1-AP (MYOM1-Specific antibody) at dilution of 1:2000 incubated at room temperature for 1.5 hours.



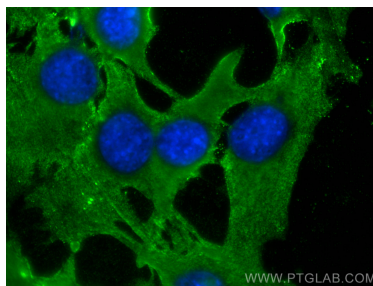
Immunohistochemical analysis of paraffin-embedded human skeletal muscle tissue slide using 20360-1-AP (MYOM1-Specific Antibody) at dilution of 1:50 (under 10x lens).



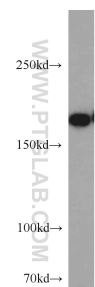
Immunohistochemical analysis of paraffin-embedded human skeletal muscle tissue slide using 20360-1-AP (MYOM1-Specific Antibody) at dilution of 1:50 (under 40x lens).



Immunofluorescent analysis of (4% PFA) fixed mouse skeletal muscle tissue using 20360-1-AP (MYOM1-Specific antibody) at dilution of 1:100 and Alexa Fluor 488-Conjugated Goat Anti-Rabbit IgG(H+L).



Immunofluorescent analysis of (-20°C Methanol) fixed C2C12 cells using MYOM1-Specific antibody (20360-1-AP) at dilution of 1:200 and CoraLite® 488-Conjugated Goat Anti-Rabbit IgG(H+L).



mouse skeletal muscle tissue were subjected to SDS PAGE followed by western blot with 20360-1-AP (MYOM1-Specific antibody) at dilution of 1:600 incubated at room temperature for 1.5 hours.