

For Research Use Only

RBAP48 Polyclonal antibody

Catalog Number: 20364-1-AP

Featured Product

14 Publications



Basic Information

Catalog Number:

20364-1-AP

Size:

150ul, Concentration: 700 ug/ml by Nanodrop;

Source:

Rabbit

Isotype:

IgG

GenBank Accession Number:

NM_005610

GeneID (NCBI):

5928

UNIPROT ID:

Q09028

Full Name:

retinoblastoma binding protein 4

Calculated MW:

48 kDa

Observed MW:

48-50 kDa

Purification Method:

Antigen affinity purification

Recommended Dilutions:

WB 1:1000-1:6000

IP 0.5-4.0 ug for 1.0-3.0 mg of total protein lysate

IHC 1:1000-1:4000

IF/ICC 1:50-1:500

Applications

Tested Applications:

WB, IHC, IF/ICC, IP, ELISA

Cited Applications:

WB, IHC, IP

Species Specificity:

human, mouse

Cited Species:

human, mouse

Note-IHC: suggested antigen retrieval with TE buffer pH 9.0; (*) Alternatively, antigen retrieval may be performed with citrate buffer pH 6.0

Positive Controls:

WB: A431 cells, Lo2 cells, Jurkat cells, HepG2 cells, K-562 cells, HeLa cells, human brain tissue, HEK-293 cells, SH-SY5Y cells, mouse brain tissue

IP: HeLa cells,

IHC: human cervical cancer tissue, human breast cancer tissue

IF/ICC: HeLa cells,

Background Information

RBBP4, also named as RBAP48 and CAF-I p48, belongs to the WD repeat RBAP46/RBAP48/MSI1 family. RBBP4 is a core histone-binding subunit that may target chromatin assembly factors, chromatin remodeling factors and histone deacetylases to their histone substrates in a manner that is regulated by nucleosomal DNA. It is a component of several complexes which regulate chromatin metabolism. The antibody is specific to RBBP4.

Notable Publications

Author	Pubmed ID	Journal	Application
Pingping Zhu	30224759	Nat Cell Biol	WB
Pingping Zhu	26426078	J Clin Invest	WB, IHC
Orhi Barroso-Gomila	34795231	Nat Commun	WB

Storage

Storage:

Store at -20°C. Stable for one year after shipment.

Storage Buffer:

PBS with 0.02% sodium azide and 50% glycerol pH 7.3.

Aliquoting is unnecessary for -20°C storage

*** 20ul sizes contain 0.1% BSA

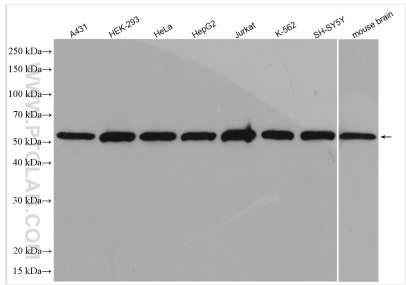
For technical support and original validation data for this product please contact:

T: 1 (888) 4PTGLAB (1-888-478-4522) (toll free in USA), or 1(312) 455-8498 (outside USA)

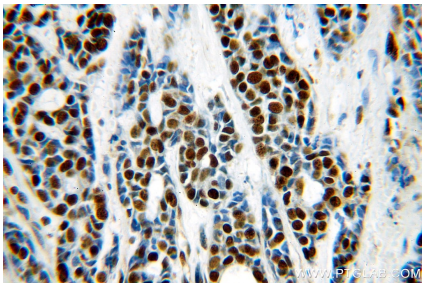
E: proteintech@ptglab.com
W: ptglab.com

This product is exclusively available under Proteintech Group brand and is not available to purchase from any other manufacturer.

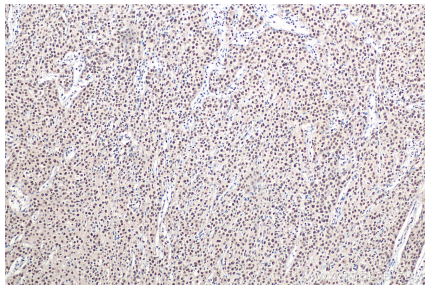
Selected Validation Data



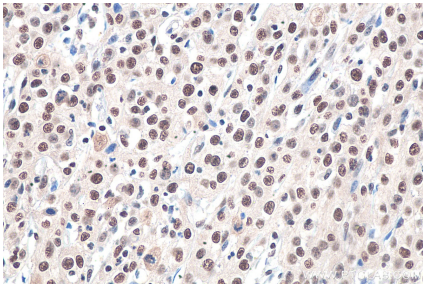
Various lysates were subjected to SDS PAGE followed by western blot with 20364-1-AP (RBAP48 antibody) at dilution of 1:3000 incubated at room temperature for 1.5 hours.



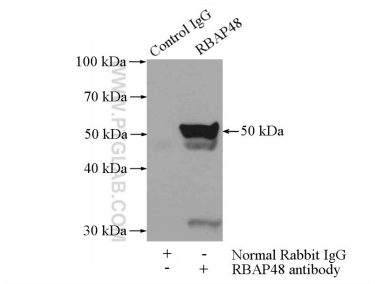
Immunohistochemical analysis of paraffin-embedded human cervical cancer using 20364-1-AP (RBAP48 antibody) at dilution of 1:100 (under 40x lens).



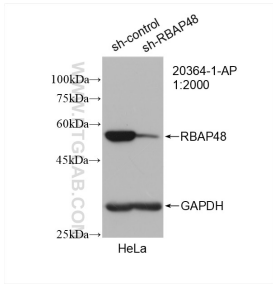
Immunohistochemical analysis of paraffin-embedded human cervical cancer tissue slide using 20364-1-AP (RBAP48 antibody) at dilution of 1:2000 (under 10x lens). Heat mediated antigen retrieval with Tris-EDTA buffer (pH 9.0).



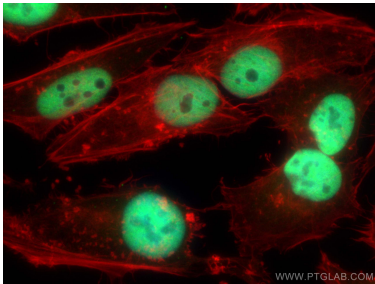
Immunohistochemical analysis of paraffin-embedded human cervical cancer tissue slide using 20364-1-AP (RBAP48 antibody) at dilution of 1:2000 (under 40x lens). Heat mediated antigen retrieval with Tris-EDTA buffer (pH 9.0).



IP result of anti-RBAP48 (IP:20364-1-AP, 4ug; Detection:20364-1-AP 1:1000) with HeLa cells lysate 2000ug.



WB result of RBAP48 antibody (20364-1-AP; 1:2000; incubated at room temperature for 1.5 hours) with sh-Control and sh-RBAP48 transfected HeLa cells.



Immunofluorescent analysis of (4% PFA) fixed HeLa cells using RBAP48 antibody (20364-1-AP) at dilution of 1:200 and CoraLite® 488-Conjugated Goat Anti-Rabbit IgG(H+L), CL594-Phalloidin (red).