

For Research Use Only

RbAp46 Polyclonal antibody

Catalog Number: 20365-1-AP

Featured Product

6 Publications



Basic Information

| | | |
|---|---|---|
| Catalog Number: 20365-1-AP | GenBank Accession Number: NM_002893 | Purification Method: Antigen affinity purification |
| Size: 150ul, Concentration: 450 µg/ml by Nanodrop and 260 µg/ml by Bradford method using BSA as the standard; | GeneID (NCBI): 5931 | Recommended Dilutions: WB 1:2000-1:12000 IP 0.5-4.0 ug for IP and 1:1000-1:4000 for WB |
| Source: Rabbit | Full Name: retinoblastoma binding protein 7 | IHC 1:20-1:200 |
| Isotype: IgG | Calculated MW: 48 kDa | IF 1:50-1:500 |
| | Observed MW: 52 kDa | |

Applications

Tested Applications:
IF, IHC, IP, WB, ELISA

Cited Applications:
IHC, WB

Species Specificity:
human, mouse, rat

Cited Species:
human

Note-IHC: suggested antigen retrieval with TE buffer pH 9.0; (*) Alternatively, antigen retrieval may be performed with citrate buffer pH 6.0

Positive Controls:

WB: A431 cells, COS-7 cells, HEK-293T cells, HeLa cells

IP: A431 cells,

IHC: human cervical cancer tissue, human breast cancer tissue

IF: A431 cells,

Background Information

RBBP7, also named as RBAP46, belongs to the WD repeat RBAP46/RBAP48/MSI1 family. RBBP7 is a core histone-binding subunit that may target chromatin remodeling factors, histone acetyltransferases and histone deacetylases to their histone substrates in a manner that is regulated by nucleosomal DNA. It is a component of several complexes which regulate chromatin metabolism. The antibody is specific to RBBP7.

Notable Publications

| Author | Pubmed ID | Journal | Application |
|---------------|-----------|----------------------------|-------------|
| Jianqing Wang | 31636385 | Oncogene | WB |
| Ning Yu | 30546458 | Oncol Lett | WB,IHC |
| Can Ma | 29758199 | Biochem Biophys Res Commun | WB,IHC |

Storage

Storage:

Store at -20°C. Stable for one year after shipment.

Storage Buffer:

PBS with 0.02% sodium azide and 50% glycerol pH 7.3.

Aliquoting is unnecessary for -20°C storage

*** 20ul sizes contain 0.1% BSA

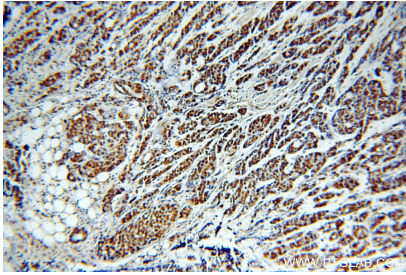
For technical support and original validation data for this product please contact:

T: 1 (888) 4PTGLAB (1-888-478-4522) (toll free in USA), or 1(312) 455-8498 (outside USA)

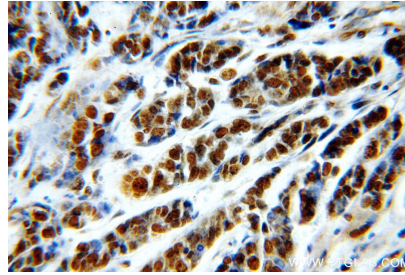
E: proteintech@ptglab.com
W: ptglab.com

This product is exclusively available under Proteintech Group brand and is not available to purchase from any other manufacturer.

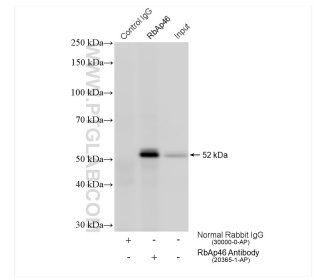
Selected Validation Data



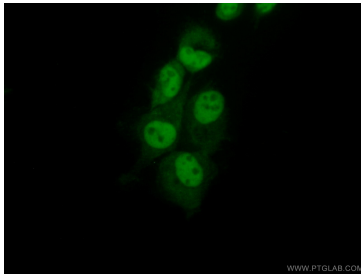
Immunohistochemical analysis of paraffin-embedded human cervical cancer using 20365-1-AP (RbAp46 antibody) at dilution of 1:50 (under 10x lens).



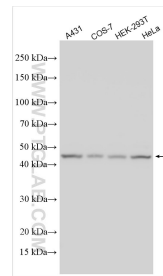
Immunohistochemical analysis of paraffin-embedded human cervical cancer using 20365-1-AP (RbAp46 antibody) at dilution of 1:50 (under 40x lens).



IP result of anti-RbAp46(IP:20365-1-AP, 4ug; Detection:20365-1-AP 1:4000) with A431 cells lysate 2640 ug.



Immunofluorescent analysis of (10% Formaldehyde) fixed A431 cells using 20365-1-AP (RbAp46 antibody) at dilution of 1:50 and Alexa Fluor 488-conjugated AffiniPure Goat Anti-Rabbit IgG(H+L).



Various lysates were subjected to SDS PAGE followed by western blot with 20365-1-AP (RbAp46 antibody) at dilution of 1:6000 incubated at room temperature for 1.5 hours.