

For Research Use Only

# PECI Polyclonal antibody

Catalog Number: 20383-1-AP

2 Publications



## Basic Information

### Catalog Number:

20383-1-AP

### Size:

150ul, Concentration: 133 ug/ml by Nanodrop and 133 ug/ml by Bradford method using BSA as the standard;

### Source:

Rabbit

### Isotype:

IgG

### Immunogen Catalog Number:

AG14211

### GenBank Accession Number:

BC034702

### GeneID (NCBI):

10455

### UNIPROT ID:

O75521

### Full Name:

peroxisomal D3,D2-enoyl-CoA isomerase

### Calculated MW:

394 aa, 44 kDa

### Observed MW:

40 kDa

### Purification Method:

Antigen affinity purification

### Recommended Dilutions:

WB 1:500-1:1000

IHC 1:20-1:200

## Applications

### Tested Applications:

WB, IHC, ELISA

### Cited Applications:

WB, IF

### Species Specificity:

human, mouse

### Cited Species:

human, mouse

**Note-IHC: suggested antigen retrieval with TE buffer pH 9.0; (\*) Alternatively, antigen retrieval may be performed with citrate buffer pH 6.0**

### Positive Controls:

WB : human placenta tissue,

IHC : human heart tissue, human hepatocirrhosis tissue

## Notable Publications

Author	Pubmed ID	Journal	Application
Francesc Palau	39801517	Res Sq	WB,IF
Jingying Wu	39130597	ACS Omega	WB

## Storage

### Storage:

Store at -20°C. Stable for one year after shipment.

### Storage Buffer:

PBS with 0.02% sodium azide and 50% glycerol, pH7.3

Aliquoting is unnecessary for -20°C storage

\*\*\* 20ul sizes contain 0.1% BSA

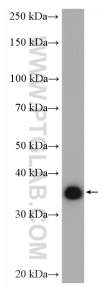
For technical support and original validation data for this product please contact:

T: 1 (888) 4PTGLAB (1-888-478-4522) (toll free in USA), or 1(312) 455-8498 (outside USA)

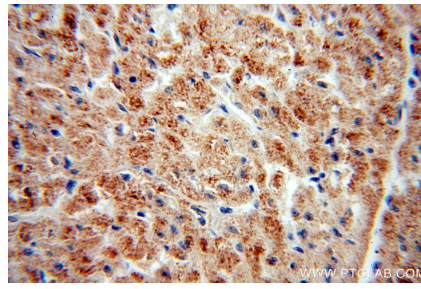
E: [proteintech@ptglab.com](mailto:proteintech@ptglab.com)  
W: [ptglab.com](http://ptglab.com)

This product is exclusively available under Proteintech Group brand and is not available to purchase from any other manufacturer.

## Selected Validation Data



human placenta tissue were subjected to SDS PAGE followed by western blot with 20383-1-AP (PECI antibody) at dilution of 1:500 incubated at room temperature for 1.5 hours.



Immunohistochemical analysis of paraffin-embedded human heart using 20383-1-AP (PECI antibody) at dilution of 1:100 (under 40x lens).