

For Research Use Only

MIF Polyclonal antibody

Catalog Number: 20415-1-AP

Featured Product

24 Publications



Basic Information

Catalog Number:

20415-1-AP

Size:

150ul, Concentration: 650 ug/ml by Nanodrop;

Source:

Rabbit

Isotype:

IgG

Immunogen Catalog Number:

AG14058

GenBank Accession Number:

BC000447

GeneID (NCBI):

4282

UNIPROT ID:

P14174

Full Name:

macrophage migration inhibitory factor (glycosylation-inhibiting factor)

Calculated MW:

115 aa, 12 kDa

Observed MW:

12 kDa

Purification Method:

Antigen affinity purification

Recommended Dilutions:

WB 1:500-1:2000

IP 0.5-4.0 ug for 1.0-3.0 mg of total protein lysate

IF/ICC 1:50-1:500

Applications

Tested Applications:

WB, IF/ICC, FC (Intra), IP, ELISA

Cited Applications:

WB, IF

Species Specificity:

human, mouse, rat

Cited Species:

human, mouse, rat

Positive Controls:

WB : A549 cells, U-937 cells, Y79 cells, HL-60 cells, Jurkat cells, U-87 MG cells, HEK-293T cells, HUVEC cells, J774A.1 cells, Neuro-2a cells, mouse spleen tissue, rat spleen tissue

IP : mouse spleen tissue,

IF/ICC : U-251 cells,

Background Information

MIF is a pleiotropic cytokine that contributes to the pathogenesis of many autoimmune diseases through its upstream immunoregulatory function and its polymorphic genetic locus. MIF is a highly conserved protein of 12.5 kDa, with evolutionarily ancient homologues in plants, protozoans, nematodes, and invertebrates.

Notable Publications

Author	Pubmed ID	Journal	Application
Rui-Min Liu	29079416	Cancer Lett	WB
Langdong Chen	27754507	Mol Biosyst	
Xing Guo	29113309	Oncotarget	WB

Storage

Storage:

Store at -20°C. Stable for one year after shipment.

Storage Buffer:

PBS with 0.02% sodium azide and 50% glycerol pH 7.3.

Aliquoting is unnecessary for -20°C storage

*** 20ul sizes contain 0.1% BSA

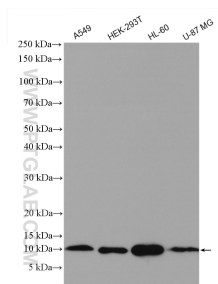
For technical support and original validation data for this product please contact:

T: 1 (888) 4PTGLAB (1-888-478-4522) (toll free in USA), or 1(312) 455-8498 (outside USA)

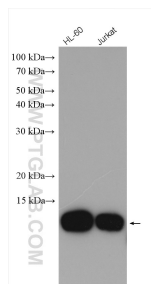
E: proteintech@ptglab.com
W: ptglab.com

This product is exclusively available under Proteintech Group brand and is not available to purchase from any other manufacturer.

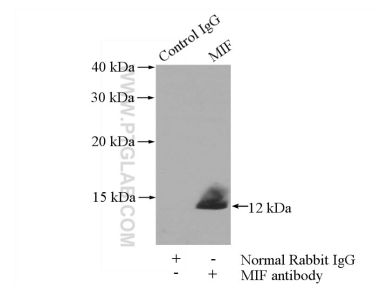
Selected Validation Data



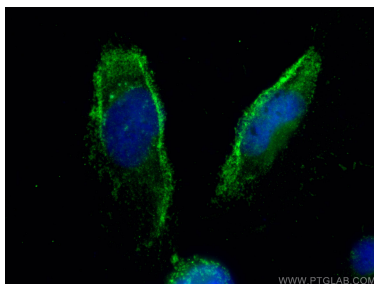
Various lysates were subjected to SDS PAGE followed by western blot with 20415-1-AP (MIF antibody) at dilution of 1:1000 incubated at room temperature for 1.5 hours.



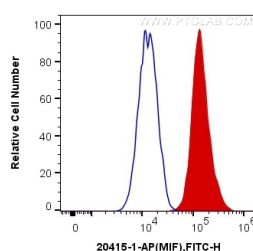
Various lysates were subjected to SDS PAGE followed by western blot with 20415-1-AP (MIF antibody) at dilution of 1:1000 incubated at room temperature for 1.5 hours.



IP result of anti-MIF (IP:20415-1-AP, 4ug; Detection:20415-1-AP 1:1000) with mouse spleen tissue lysate 4000ug.



Immunofluorescent analysis of (-20°C Ethanol) fixed U-251 cells using MIF antibody (20415-1-AP) at dilution of 1:200 and CoraLite®488-Conjugated AffiniPure Goat Anti-Rabbit IgG(H+L).



1X10⁶ THP-1 cells were intracellularly stained with 0.4 ug Anti-Human MIF (20415-1-AP) and CoraLite®488-Conjugated AffiniPure Goat Anti-Rabbit IgG(H+L) at dilution 1:1000 (red), or 0.4 ug Control Antibody. Cells were fixed with 4% PFA and permeabilized with Flow Cytometry Perm Buffer (PF00011-C).