

For Research Use Only

# Fibulin-1 Polyclonal antibody

Catalog Number: 20425-1-AP **2 Publications**



## Basic Information

<b>Catalog Number:</b> 20425-1-AP	<b>GenBank Accession Number:</b> BC022497	<b>Purification Method:</b> Antigen affinity purification
<b>Size:</b> 150ul , Concentration: 260 µg/ml by Nanodrop and 240 µg/ml by Bradford method using BSA as the standard;	<b>GeneID (NCBI):</b> 2192	<b>Recommended Dilutions:</b> WB 1:500-1:2000 IP 0.5-4.0 ug for 1.0-3.0 mg of total protein lysate IF 1:50-1:500
<b>Source:</b> Rabbit	<b>Full Name:</b> fibulin 1	
<b>Isotype:</b> IgG	<b>Calculated MW:</b> 703 aa, 77 kDa	
<b>Immunogen Catalog Number:</b> AG14249	<b>Observed MW:</b> 100 kDa	

## Applications

<b>Tested Applications:</b> IF, IP, WB, ELISA	<b>Positive Controls:</b>
<b>Cited Applications:</b> IF, IHC, WB	<b>WB:</b> human placenta tissue,
<b>Species Specificity:</b> human, mouse, rat	<b>IP:</b> human placenta tissue,
<b>Cited Species:</b> human	<b>IF:</b> HeLa cells,

## Background Information

### Notable Publications

Author	Pubmed ID	Journal	Application
Yueyan Li	32969194	Proteomics Clin Appl	WB
Guokun Zhang	37875042	Comput Biol Med	WB, IHC, IF

## Storage

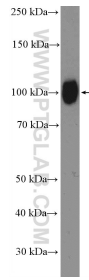
**Storage:**  
Store at -20°C. Stable for one year after shipment.  
**Storage Buffer:**  
PBS with 0.02% sodium azide and 50% glycerol pH 7.3.  
Aliquoting is unnecessary for -20°C storage

\*\*\* 20ul sizes contain 0.1% BSA

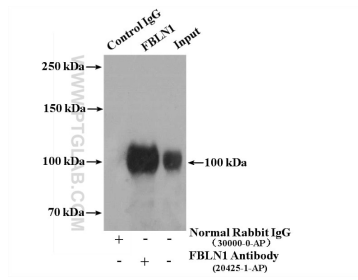
For technical support and original validation data for this product please contact:  
T: 1 (888) 4PTGLAB (1-888-478-4522) (toll free in USA), or 1(312) 455-8498 (outside USA)  
E: proteintech@ptglab.com  
W: ptglab.com

This product is exclusively available under Proteintech Group brand and is not available to purchase from any other manufacturer.

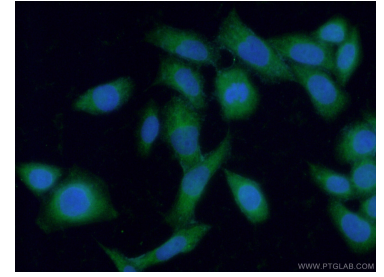
## Selected Validation Data



human placenta tissue were subjected to SDS PAGE followed by western blot with 20425-1-AP (Fibulin-1 antibody at dilution of 1:1000 incubated at room temperature for 1.5 hours.



IP result of anti-Fibulin-1 (IP:20425-1-AP, 4ug; Detection:20425-1-AP 1:700) with human placenta tissue lysate 2600 ug.



Immunofluorescent analysis of (-20°C Ethanol) fixed HeLa cells using 20425-1-AP (Fibulin-1 antibody) at dilution of 1:50 and Alexa Fluor 488-conjugated AffiniPure Goat Anti-Rabbit IgG(H+L).