

For Research Use Only

C5orf44 Polyclonal antibody

Catalog Number: 20444-1-AP



Basic Information

Catalog Number: 20444-1-AP	GenBank Accession Number: BC012006	Purification Method: Antigen affinity purification
Size: 150ul , Concentration: 650 ug/ml by Nanodrop and 373 ug/ml by Bradford method using BSA as the standard;	GeneID (NCBI): 80006	Recommended Dilutions: WB 1:500-1:1000
Source: Rabbit	UNIPROT ID: A5PLN9	IHC 1:20-1:200
Isotype: IgG	Full Name: chromosome 5 open reading frame 44	IF/ICC 1:200-1:800
Immunogen Catalog Number: AG14267	Calculated MW: 417 aa, 47 kDa	
	Observed MW: 47 kDa	

Applications

Tested Applications: WB, IHC, IF/ICC, ELISA	Positive Controls:
Species Specificity: human, mouse, rat	WB : HEK-293 cells, HeLa cells
Note-IHC: suggested antigen retrieval with TE buffer pH 9.0; (*) Alternatively, antigen retrieval may be performed with citrate buffer pH 6.0	IHC : human kidney tissue, human testis tissue
	IF/ICC : HEK-293 cells,

Background Information

The function of C5orf44 has not been widely studied, and is yet to be fully elucidated. The MW of this protein is 47 kDa, and this antibody specially recognises the 47 kDa protein.

Storage

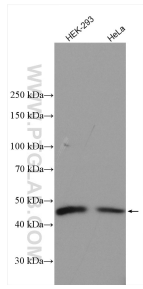
Storage:
Store at -20°C. Stable for one year after shipment.
Storage Buffer:
PBS with 0.02% sodium azide and 50% glycerol pH 7.3.
Aliquoting is unnecessary for -20°C storage

*** 20ul sizes contain 0.1% BSA

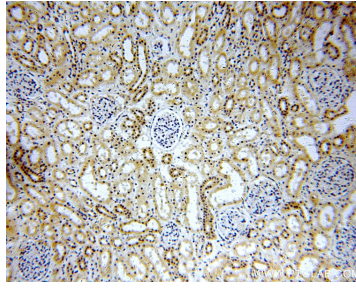
For technical support and original validation data for this product please contact:
T: 1 (888) 4PTGLAB (1-888-478-4522) (toll free in USA), or 1(312) 455-8498 (outside USA)
E: proteintech@ptglab.com
W: ptglab.com

This product is exclusively available under Proteintech Group brand and is not available to purchase from any other manufacturer.

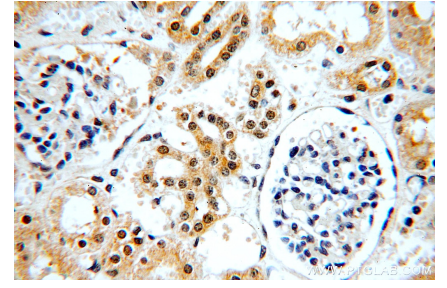
Selected Validation Data



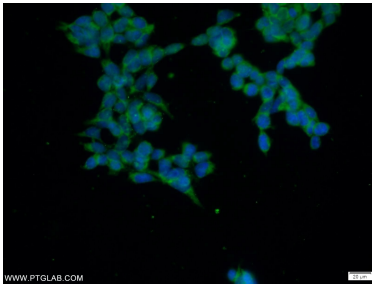
Various lysates were subjected to SDS PAGE followed by western blot with 20444-1-AP (C5orf44 antibody) at dilution of 1:800 incubated at room temperature for 1.5 hours.



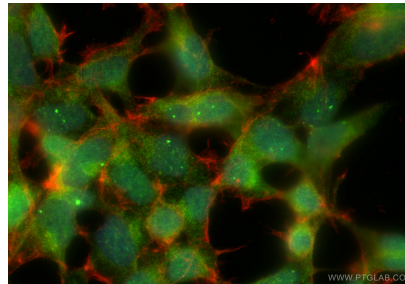
Immunohistochemical analysis of paraffin-embedded human kidney using 20444-1-AP (C5orf44 antibody) at dilution of 1:50 (under 10x lens).



Immunohistochemical analysis of paraffin-embedded human kidney using 20444-1-AP (C5orf44 antibody) at dilution of 1:50 (under 40x lens).



Immunofluorescent analysis of HEK-293 cells using 20444-1-AP (C5orf44 antibody) at dilution of 1:50 and Alexa Fluor 488-conjugated AffiniPure Goat Anti-Rabbit IgG(H+L).



Immunofluorescent analysis of (4% PFA) fixed HEK-293 cells using C5orf44 antibody (20444-1-AP) at dilution of 1:400 and CoraLite®488-Conjugated Goat Anti-Rabbit IgG(H+L) (SA00013-2), CL594-Phalloidin (red).