

For Research Use Only

C10orf58 Polyclonal antibody

Catalog Number: 20446-1-AP

1 Publications



Basic Information

Catalog Number: 20446-1-AP	GenBank Accession Number: BC005871	Purification Method: Antigen affinity purification
Size: 150ul , Concentration: 450 ug/ml by Nanodrop and 260 ug/ml by Bradford method using BSA as the standard;	GeneID (NCBI): 84293	Recommended Dilutions: WB: 1:200-1:1000
Source: Rabbit	UNIPROT ID: Q9BRX8	IHC: 1:50-1:500
Isotype: IgG	Full Name: chromosome 10 open reading frame 58	IF/ICC: 1:20-1:200
Immunogen Catalog Number: AG14272	Calculated MW: 229 aa, 26 kDa	
	Observed MW: 24-30 kDa	

Applications

Tested Applications: WB, IHC, IF/ICC, ELISA	Positive Controls: WB : ROS1728 cells,
Cited Applications: IHC	IHC : human skin tissue,
Species Specificity: human, rat	IF/ICC : ROS1728 cells,
Cited Species: human	
Note-IHC: suggested antigen retrieval with TE buffer pH 9.0; (*) Alternatively, antigen retrieval may be performed with citrate buffer pH 6.0	

Background Information

C10orf58, also name as FAM213A and PAMM, is involved in redox regulation of the cell. It acts as an antioxidant. C10orf58 inhibits TNFSF11-induced NFkB1 and JUN activation and osteoclast differentiation. It may affect bone resorption and help to maintain bone mass. The MW of C10orf58 is 24-30 kDa.

Notable Publications

Author	Pubmed ID	Journal	Application
Jie Zhang	38666541	Oncol Rep	IHC

Storage

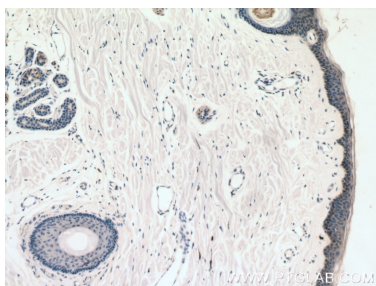
Storage:
Store at -20°C. Stable for one year after shipment.
Storage Buffer:
PBS with 0.02% sodium azide and 50% glycerol, pH7.3
Aliquoting is unnecessary for -20°C storage

*** 20ul sizes contain 0.1% BSA

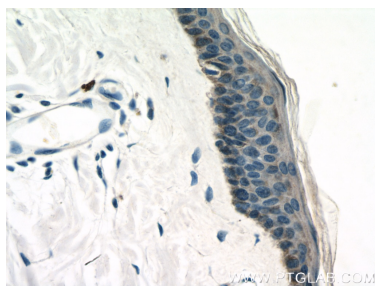
For technical support and original validation data for this product please contact:
T: 1 (888) 4PTGLAB (1-888-478-4522) (toll free in USA), or 1(312) 455-8498 (outside USA)
E: proteintech@ptglab.com
W: ptglab.com

This product is exclusively available under Proteintech Group brand and is not available to purchase from any other manufacturer.

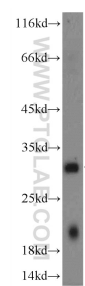
Selected Validation Data



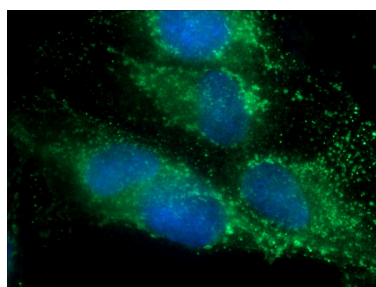
Immunohistochemical analysis of paraffin-embedded human skin tissue slide using 20446-1-AP (C10orf58 antibody) at dilution of 1:200 (under 10x lens).



Immunohistochemical analysis of paraffin-embedded human skin tissue slide using 20446-1-AP (C10orf58 antibody) at dilution of 1:200 (under 40x lens).



ROS1728 cells were subjected to SDS PAGE followed by western blot with 20446-1-AP (C10orf58 Antibody) at dilution of 1:300 incubated at room temperature for 1.5 hours.



Immunofluorescent analysis of ROS1728 cells using 20446-1-AP (C10orf58 antibody) at dilution of 1:50 and Alexa Fluor 488-conjugated Goat Anti-Rabbit IgG(H+L).