

For Research Use Only

INF2 Polyclonal antibody

Catalog Number: 20466-1-AP

Featured Product

33 Publications



Basic Information

Catalog Number:

20466-1-AP

Size:

150ul, Concentration: 600 ug/ml by Nanodrop;

Source:

Rabbit

Isotype:

IgG

Immunogen Catalog Number:

AG14302

GenBank Accession Number:

BC008756

GeneID (NCBI):

64423

UNIPROT ID:

Q27J81

Full Name:

inverted formin, FH2 and WH2 domain containing

Calculated MW:

1249 aa, 136 kDa

Observed MW:

180-200 kDa

Purification Method:

Antigen affinity purification

Recommended Dilutions:

WB 1:1000-1:4000

IP 0.5-4.0 ug for 1.0-3.0 mg of total protein lysate

IHC 1:20-1:200

IF/ICC 1:200-1:800

Applications

Tested Applications:

WB, IHC, IF/ICC, IP, ELISA

Cited Applications:

WB, IHC, IF, IP, CoIP

Species Specificity:

human, mouse

Cited Species:

human, mouse, zebrafish

Note-IHC: suggested antigen retrieval with TE buffer pH 9.0; (*) Alternatively, antigen retrieval may be performed with citrate buffer pH 6.0

Positive Controls:

WB : A431 cells, HepG2 cells, NIH/3T3 cells, HeLa cells, PC-3 cells, K-562 cells

IP : NIH/3T3 cells,

IHC : human kidney tissue,

IF/ICC : HepG2 cells,

Background Information

INF2 is a member of the formin family of actin-regulating proteins. INF2 is peripherally bound to the cytoplasmic face of the endoplasmic reticulum (ER). Mutations in the formin gene INF2 cause focal segmental glomerulosclerosis. The predicted MW of INF2 is around 136 kDa, while higher molecular mass from 140-200 kDa has been reported in literature (26383224, 20493814, 19366733).

Notable Publications

| Author | Pubmed ID | Journal | Application |
|------------------|-----------|---------------------------|-------------|
| Zhanwei Zhang | 30267803 | Int J Biochem Cell Biol | WB |
| Pantipa Tonsawan | 31553647 | Am J Physiol Cell Physiol | WB |
| Hiroshi Tamura | 26383224 | Nephrology (Carlton) | WB, IF |

Storage

Storage:

Store at -20°C. Stable for one year after shipment.

Storage Buffer:

PBS with 0.02% sodium azide and 50% glycerol pH 7.3.

Aliquoting is unnecessary for -20°C storage

*** 20ul sizes contain 0.1% BSA

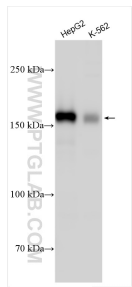
For technical support and original validation data for this product please contact:

T: 1 (888) 4PTGLAB (1-888-478-4522) (toll free in USA), or 1(312) 455-8498 (outside USA)

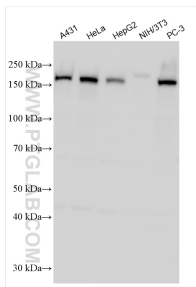
E: proteintech@ptglab.com
W: ptglab.com

This product is exclusively available under Proteintech Group brand and is not available to purchase from any other manufacturer.

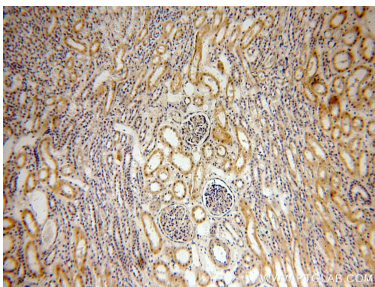
Selected Validation Data



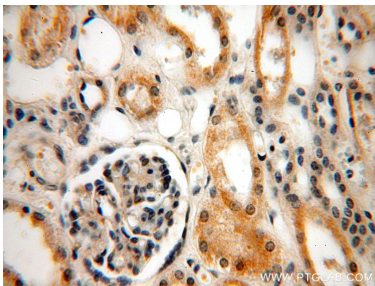
Various lysates were subjected to SDS PAGE followed by western blot with 20466-1-AP (INF2 antibody) at dilution of 1:1500 incubated at room temperature for 1.5 hours.



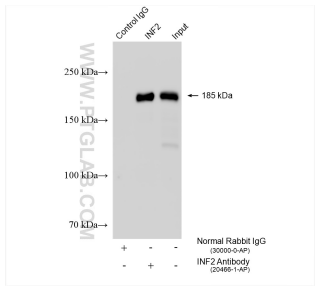
Various lysates were subjected to SDS PAGE followed by western blot with 20466-1-AP (INF2 antibody) at dilution of 1:2000 incubated at room temperature for 1.5 hours.



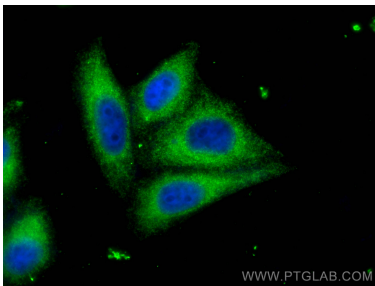
Immunohistochemical analysis of paraffin-embedded human kidney using 20466-1-AP (INF2 antibody) at dilution of 1:100 (under 10x lens).



Immunohistochemical analysis of paraffin-embedded human kidney using 20466-1-AP (INF2 antibody) at dilution of 1:100 (under 40x lens).



IP result of anti-INF2 (IP:20466-1-AP, 4ug; Detection:20466-1-AP 1:1500) with NIH/3T3 cells lysate 1505 ug.



Immunofluorescent analysis of (-20°C Ethanol) fixed HepG2 cells using INF2 antibody (20466-1-AP) at dilution of 1:400 and CoraLite®488-Conjugated AffiniPure Goat Anti-Rabbit IgG(H+L) (SA00013-2).