

For Research Use Only

SLC37A2 Polyclonal antibody

Catalog Number: 20469-1-AP

1 Publications



Basic Information

Catalog Number:

20469-1-AP

Size:

150ul, Concentration: 200 ug/ml by Nanodrop and 133 ug/ml by Bradford method using BSA as the standard;

Source:

Rabbit

Isotype:

IgG

Immunogen Catalog Number:

AG14306

GenBank Accession Number:

BC051314

GeneID (NCBI):

219855

UNIPROT ID:

Q8TED4

Full Name:

solute carrier family 37 (glycerol-3-phosphate transporter), member 2

Calculated MW:

505 aa, 55 kDa

Observed MW:

50-75 kDa

Purification Method:

Antigen affinity purification

Recommended Dilutions:

WB 1:300-1:600

Applications

Tested Applications:

WB, ELISA

Cited Applications:

WB, IHC

Species Specificity:

human, mouse, rat

Cited Species:

human

Positive Controls:

WB: mouse thymus tissue, HeLa cells, RAW 264.7 cells, mouse spleen tissue, rat thymus tissue

Background Information

The solute carrier family 37 (SLC37) consists of four sugar-phosphate exchangers, A1, A2, A3, and A4, which are anchored in the endoplasmic reticulum (ER) membrane (PMID:23506893). Solute Carrier Family 37 Member 2 (SLC37A2), also known as SPX2, was firstly identified in a work, conducted on mice and aimed to detect cAMP inducible genes playing a role in promoting cholesterol efflux from the macrophage cell line RAW264 via apoE and apoA1 (PMID:11004510). Interestingly, of the four SLC37A members, SLC37A2 displays the highest level of transcript abundance in neutrophils and macrophages, indicating that SLC37A2 may play an essential role in regulating innate immune function (PMID:32428862).

Notable Publications

Author	Pubmed ID	Journal	Application
Xinwei Xu	39259386	Cell Biol Toxicol	WB, IHC

Storage

Storage:

Store at -20°C. Stable for one year after shipment.

Storage Buffer:

PBS with 0.02% sodium azide and 50% glycerol pH 7.3.

Aliquoting is unnecessary for -20°C storage

*** 20ul sizes contain 0.1% BSA

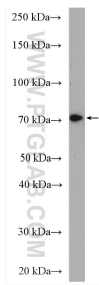
For technical support and original validation data for this product please contact:

T: 1 (888) 4PTGLAB (1-888-478-4522) (toll free in USA), or 1(312) 455-8498 (outside USA)

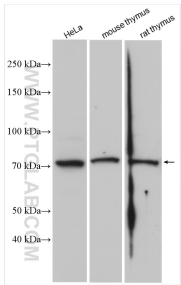
E: proteintech@ptglab.com
W: ptglab.com

This product is exclusively available under Proteintech Group brand and is not available to purchase from any other manufacturer.

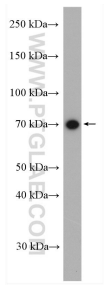
Selected Validation Data



mouse thymus tissue were subjected to SDS PAGE followed by western blot with 20469-1-AP (SLC37A2 antibody) at dilution of 1:500 incubated at room temperature for 1.5 hours.



Various lysates were subjected to SDS PAGE followed by western blot with 20469-1-AP (SLC37A2 antibody) at dilution of 1:1500 incubated at room temperature for 1.5 hours.



mouse spleen tissue were subjected to SDS PAGE followed by western blot with 20469-1-AP (SLC37A2 antibody) at dilution of 1:500 incubated at room temperature for 1.5 hours.