

For Research Use Only

WDR32 Polyclonal antibody

Catalog Number: 20483-1-AP



Basic Information

Catalog Number: 20483-1-AP	GenBank Accession Number: BC003520	Purification Method: Antigen affinity purification
Size: 150ul , Concentration: 300 µg/ml by Nanodrop and 180 µg/ml by Bradford method using BSA as the standard;	GeneID (NCBI): 79269	Recommended Dilutions: WB 1:500-1:1000 IP 0.5-4.0 ug for IP and 1:200-1:1000 for WB
Source: Rabbit	Full Name: WD repeat domain 32	IHC 1:20-1:200
Isotype: IgG	Calculated MW: 559 aa, 61 kDa	IF 1:20-1:200
Immunogen Catalog Number: AG14360	Observed MW: 61 kDa	

Applications

Tested Applications: IF, IHC, IP, WB, ELISA	Positive Controls:
Species Specificity: human, mouse, rat	WB : HeLa cells, HepG2 cells
Note-IHC: suggested antigen retrieval with TE buffer pH 9.0; (*) Alternatively, antigen retrieval may be performed with citrate buffer pH 6.0	IP : HepG2 cells,
	IHC : human testis tissue, human kidney tissue
	IF : HepG2 cells,

Background Information

WDR32, containing seven WD repeats, is also termed DDB1- and CUL4-associated factor 10 (DCAF10), which may function as a substrate receptor for CUL4-DDB1 E3 ubiquitin-protein ligase complex (PMID: 16949367). WDR32 is able to interact with DDB1 (PMID: 16949367). WDR32 is supposed to be implicated in process of ubiquitin-dependent protein degradation system. Two isoforms are described and produced by alternative splicing. Proteintech's WDR32 antibody 20483-1-AP majorly detects WDR32 isoform1 with a theoretical MW of 61 kDa.

Storage

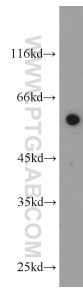
Storage:
Store at -20°C. Stable for one year after shipment.
Storage Buffer:
PBS with 0.02% sodium azide and 50% glycerol pH 7.3.
Aliquoting is unnecessary for -20°C storage

***** 20ul sizes contain 0.1% BSA**

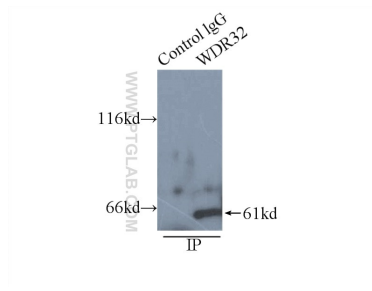
For technical support and original validation data for this product please contact:
T: 1 (888) 4PTGLAB (1-888-478-4522) (toll free in USA), or 1(312) 455-8498 (outside USA) E: proteintech@ptglab.com W: ptglab.com

This product is exclusively available under Proteintech Group brand and is not available to purchase from any other manufacturer.

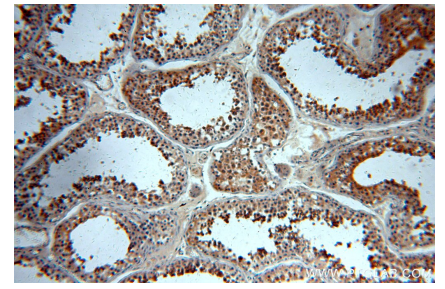
Selected Validation Data



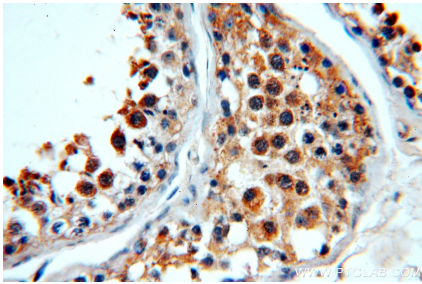
HeLa cells were subjected to SDS PAGE followed by western blot with 20483-1-AP (WDR32 antibody) at dilution of 1:800 incubated at room temperature for 1.5 hours.



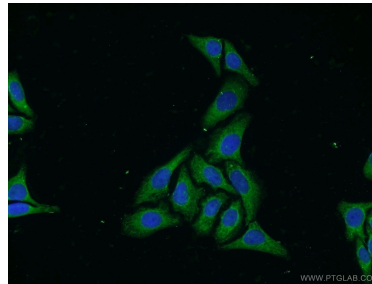
IP Result of anti-WDR32 (IP:20483-1-AP, 4ug; Detection:20483-1-AP 1:300) with HepG2 cells lysate 6000ug.



Immunohistochemical analysis of paraffin-embedded human testis using 20483-1-AP (WDR32 antibody) at dilution of 1:100 (under 10x lens).



Immunohistochemical analysis of paraffin-embedded human testis using 20483-1-AP (WDR32 antibody) at dilution of 1:100 (under 40x lens).



Immunofluorescent analysis of HepG2 cells using 20483-1-AP (WDR32 antibody) at dilution of 1:50 and Alexa Fluor 488-conjugated AffiniPure Goat Anti-Rabbit IgG(H+L).