

For Research Use Only

WIPF2 Polyclonal antibody

Catalog Number: 20512-1-AP



Basic Information

Catalog Number:

20512-1-AP

Size:

150ul , Concentration: 733 ug/ml by Bradford method using BSA as the standard;

Source:

Rabbit

Isotype:

IgG

Immunogen Catalog Number:

AG14330

GenBank Accession Number:

BC065551

GeneID (NCBI):

147179

UNIPROT ID:

Q8TF74

Full Name:

WAS/WASL interacting protein family, member 2

Calculated MW:

440 aa, 46 kDa

Observed MW:

46-50 kDa

Purification Method:

Antigen affinity purification

Recommended Dilutions:

WB 1:500-1:2000

IHC 1:50-1:500

Applications

Tested Applications:

WB, IHC, ELISA

Species Specificity:

human, mouse, rat

Note-IHC: suggested antigen retrieval with TE buffer pH 9.0; (*) Alternatively, antigen retrieval may be performed with citrate buffer pH 6.0

Positive Controls:

WB : mouse brain tissue, mouse colon tissue

IHC : human breast cancer tissue, human liver cancer tissue

Storage

Storage:

Store at -20°C. Stable for one year after shipment.

Storage Buffer:

PBS with 0.02% sodium azide and 50% glycerol pH 7.3.

Aliquoting is unnecessary for -20°C storage

*** 20ul sizes contain 0.1% BSA

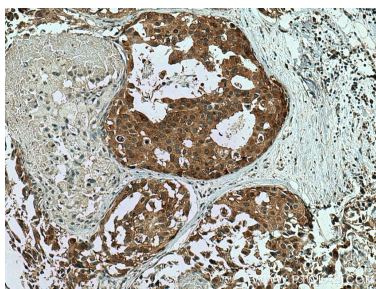
For technical support and original validation data for this product please contact:

T: 1 (888) 4PTGLAB (1-888-478-4522) (toll free in USA), or 1(312) 455-8498 (outside USA)

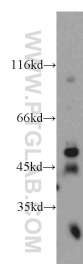
E: proteintech@ptglab.com
W: ptglab.com

This product is exclusively available under Proteintech Group brand and is not available to purchase from any other manufacturer.

Selected Validation Data



Immunohistochemical analysis of paraffin-embedded human breast cancer tissue slide using 20512-1-AP (WIPF2 antibody) at dilution of 1:200 (under 10x lens). Heat mediated antigen retrieval with Tris-EDTA buffer (pH 9.0).



mouse brain tissue were subjected to SDS PAGE followed by western blot with 20512-1-AP (WIPF2 antibody) at dilution of 1:500 incubated at room temperature for 1.5 hours.