

For Research Use Only

# SPON2 Polyclonal antibody

Catalog Number: 20513-1-AP

Featured Product

5 Publications



## Basic Information

### Catalog Number:

20513-1-AP

### Size:

150ul, Concentration: 550 ug/ml by Nanodrop and 413 ug/ml by Bradford method using BSA as the standard;

### Source:

Rabbit

### Isotype:

IgG

### Immunogen Catalog Number:

AG14337

### GenBank Accession Number:

BC002707

### GeneID (NCBI):

10417

### UNIPROT ID:

Q9BUD6

### Full Name:

spondin 2, extracellular matrix protein

### Calculated MW:

331 aa, 36 kDa

### Observed MW:

38 kDa

### Purification Method:

Antigen affinity purification

### Recommended Dilutions:

WB 1:500-1:1000

IHC 1:50-1:500

## Applications

### Tested Applications:

WB, IHC, ELISA

### Cited Applications:

WB, IHC, IF

### Species Specificity:

human

### Cited Species:

human, mouse

### Positive Controls:

WB: LNCaP cells,

IHC: human prostate cancer tissue, human prostate hyperplasia tissue

**Note-IHC: suggested antigen retrieval with TE buffer pH 9.0; (\*) Alternatively, antigen retrieval may be performed with citrate buffer pH 6.0**

## Background Information

SPON2 (Spondin 2), also known as Mindin, is a member of the F-spondin family of secreted extracellular matrix proteins. This protein has been implicated in axon guidance, immune response and adhesion. SPON2 is essential in the initiation of the innate immune response and represents a unique pattern-recognition molecule in the ECM for microbial pathogens (PMID: 14691481). It also functions as an integrin ligand for inflammatory cell recruitment and T-cell priming (PMID: 19153605). Besides, SPON2 has been reported as a prognostic biomarker for ovarian and prostate cancer (PMID: 17490732; 22615945; 23665271).

## Notable Publications

Author	Pubmed ID	Journal	Application
Haoming Lu	31691494	J Cell Mol Med	WB
Jianlei Zhang	34136486	Front Cell Dev Biol	IHC
Nan Li	32974343	Front Cell Dev Biol	WB,IF

## Storage

### Storage:

Store at -20°C. Stable for one year after shipment.

### Storage Buffer:

PBS with 0.02% sodium azide and 50% glycerol, pH7.3

Aliquoting is unnecessary for -20°C storage

\*\*\* 20ul sizes contain 0.1% BSA

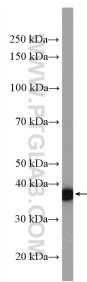
For technical support and original validation data for this product please contact:

T: 1 (888) 4PTGLAB (1-888-478-4522) (toll free in USA), or 1(312) 455-8498 (outside USA)

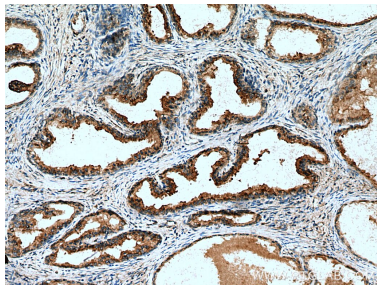
E: proteintech@ptglab.com  
W: ptglab.com

This product is exclusively available under Proteintech Group brand and is not available to purchase from any other manufacturer.

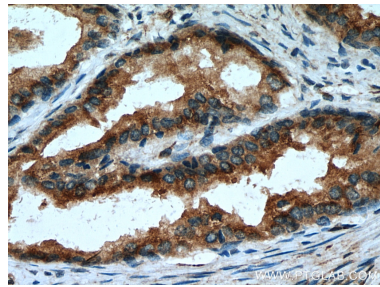
Selected Validation Data



LNCaP cells were subjected to SDS PAGE followed by western blot with 20513-1-AP (SPON2 antibody) at dilution of 1:600 incubated at room temperature for 1.5 hours.



Immunohistochemical analysis of paraffin-embedded human prostate cancer tissue slide using 20513-1-AP (SPON2 antibody) at dilution of 1:200 (under 10x lens). Heat mediated antigen retrieval with Tris-EDTA buffer (pH 9.0).



Immunohistochemical analysis of paraffin-embedded human prostate cancer tissue slide using 20513-1-AP (SPON2 antibody) at dilution of 1:200 (under 40x lens). Heat mediated antigen retrieval with Tris-EDTA buffer (pH 9.0).