

For Research Use Only

# FAM164C Polyclonal antibody

Catalog Number: 20520-1-AP



## Basic Information

<b>Catalog Number:</b> 20520-1-AP	<b>GenBank Accession Number:</b> BC004259	<b>Purification Method:</b> Antigen affinity purification
<b>Size:</b> 150ul , Concentration: 750 µg/ml by Nanodrop and 460 µg/ml by Bradford method using BSA as the standard;	<b>GeneID (NCBI):</b> 79696	<b>Recommended Dilutions:</b> WB 1:500-1:2000 IHC 1:20-1:200 IF 1:10-1:100
<b>Source:</b> Rabbit	<b>Full Name:</b> family with sequence similarity 164, member C	
<b>Isotype:</b> IgG	<b>Calculated MW:</b> 275 aa, 31 kDa	
<b>Immunogen Catalog Number:</b> AG14359	<b>Observed MW:</b> 31-36 kDa	

## Applications

<b>Tested Applications:</b> IF, IHC, WB, ELISA	<b>Positive Controls:</b> WB : HeLa cells, C6 cells
<b>Species Specificity:</b> human, rat	<b>IHC :</b> human kidney tissue, human testis tissue
<b>Note-IHC: suggested antigen retrieval with TE buffer pH 9.0; (*) Alternatively, antigen retrieval may be performed with citrate buffer pH 6.0</b>	<b>IF :</b> C6 cells,

## Background Information

FAM164C, also named as ZC2HC1C or C14orf140, is a 456 amino acid protein, which contains one C2HC-type zinc finger and belongs to the ZC2HC1 family. FAM164C exists as two isoforms. The isoform1 is a 51kDa protein and isoform2 is 31kDa.

## Storage

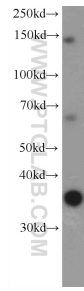
**Storage:**  
Store at -20°C. Stable for one year after shipment.  
**Storage Buffer:**  
PBS with 0.02% sodium azide and 50% glycerol pH 7.3.  
Aliquoting is unnecessary for -20°C storage

\*\*\* 20ul sizes contain 0.1% BSA

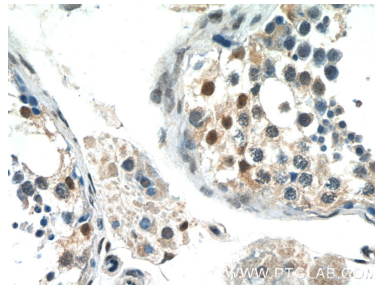
For technical support and original validation data for this product please contact:  
T: 1 (888) 4PTGLAB (1-888-478-4522) (toll free in USA), or 1(312) 455-8498 (outside USA)  
E: proteintech@ptglab.com  
W: ptglab.com

This product is exclusively available under Proteintech Group brand and is not available to purchase from any other manufacturer.

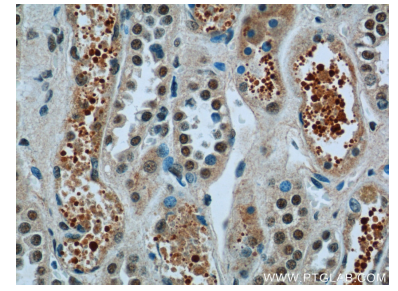
## Selected Validation Data



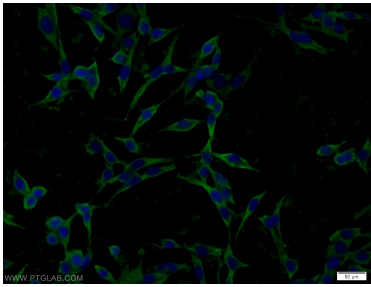
HeLa cells were subjected to SDS PAGE followed by western blot with 20520-1-AP (FAM164C Antibody) at dilution of 1:1000 incubated at room temperature for 1.5 hours.



Immunohistochemical analysis of paraffin-embedded human testis tissue slide using 20520-1-AP (FAM164C Antibody) at dilution of 1:50 (under 40x lens).



Immunohistochemical analysis of paraffin-embedded human kidney tissue slide using 20520-1-AP (FAM164C Antibody) at dilution of 1:50 (under 40x lens).



Immunofluorescent analysis of C6 cells using 20520-1-AP (FAM164C antibody) at dilution of 1:25 and Alexa Fluor 488-conjugated AffiniPure Goat Anti-Rabbit IgG(H+L).