

For Research Use Only

Hikeshi Polyclonal antibody

Catalog Number: 20524-1-AP **3 Publications**



Basic Information

Catalog Number: 20524-1-AP	GenBank Accession Number: BC006476	Purification Method: Antigen affinity purification
Size: 150ul , Concentration: 450 µg/ml by Nanodrop and 280 µg/ml by Bradford method using BSA as the standard;	GeneID (NCBI): 51501	Recommended Dilutions: WB 1:500-1:2000 IP 0.5-4.0 ug for 1.0-3.0 mg of total protein lysate
Source: Rabbit	Full Name: chromosome 11 open reading frame 73	IHC 1:20-1:200 IF 1:20-1:200
Isotype: IgG	Calculated MW: 197 aa, 22 kDa	
Immunogen Catalog Number: AG14376	Observed MW: 22 kDa	

Applications

Tested Applications: IF, IHC, IP, WB, ELISA	Positive Controls: WB : PC-3 cells, A375 cells, mouse brain tissue
Cited Applications: IF, IHC, WB	IP : mouse brain tissue,
Species Specificity: human, mouse, rat	IHC : human lung tissue,
Cited Species: human, rat, mouse	IF : A375 cells,

Note-IHC: suggested antigen retrieval with TE buffer pH 9.0; (*) Alternatively, antigen retrieval may be performed with citrate buffer pH 6.0

Background Information

Notable Publications

Author	Pubmed ID	Journal	Application
Shingo Kose	35580988	Life Sci Alliance	WB
Kohei Hattori	33535532	Medicines (Basel)	IF
Li Li	37865085	Dev Cell	WB,IHC,IF

Storage

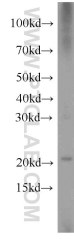
Storage:
Store at -20°C. Stable for one year after shipment.
Storage Buffer:
PBS with 0.02% sodium azide and 50% glycerol pH 7.3.
Aliquoting is unnecessary for -20°C storage

*** 20ul sizes contain 0.1% BSA

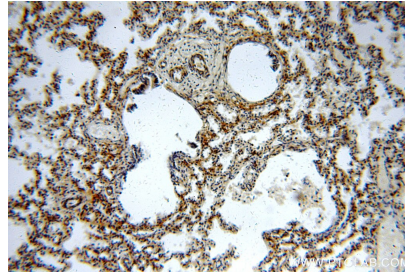
For technical support and original validation data for this product please contact:
T: 1 (888) 4PTGLAB (1-888-478-4522) (toll free in USA), or 1(312) 455-8498 (outside USA)
E: proteintech@ptglab.com
W: ptglab.com

This product is exclusively available under Proteintech Group brand and is not available to purchase from any other manufacturer.

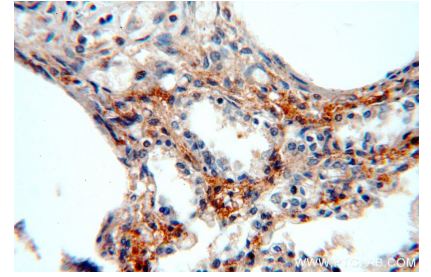
Selected Validation Data



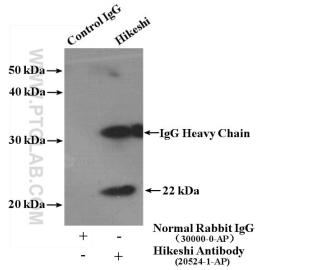
PC-3 cells were subjected to SDS PAGE followed by western blot with 20524-1-AP (Hikeshi antibody) at dilution of 1:500 incubated at room temperature for 1.5 hours.



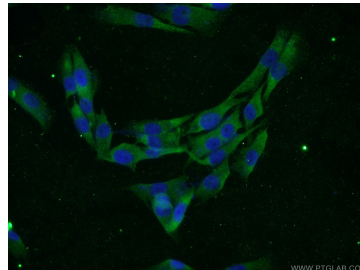
Immunohistochemical analysis of paraffin-embedded human lung using 20524-1-AP (Hikeshi antibody) at dilution of 1:100 (under 10x lens).



Immunohistochemical analysis of paraffin-embedded human lung using 20524-1-AP (Hikeshi antibody) at dilution of 1:100 (under 40x lens).



IP Result of anti-Hikeshi (IP:20524-1-AP, 4ug; Detection:20524-1-AP 1:500) with mouse brain tissue lysate 3000ug.



Immunofluorescent analysis of A375 cells using 20524-1-AP (Hikeshi antibody) at dilution of 1:50 and Alexa Fluor 488-conjugated AffiniPure Goat Anti-Rabbit IgG(H+L).