

For Research Use Only

# SLC16A12 Polyclonal antibody

Catalog Number: 20553-1-AP

2 Publications



## Basic Information

### Catalog Number:

20553-1-AP

### Size:

150ul, Concentration: 600 ug/ml by Nanodrop and 333 ug/ml by Bradford method using BSA as the standard;

### Source:

Rabbit

### Isotype:

IgG

### GenBank Accession Number:

NM\_213606

### GeneID (NCBI):

387700

### UNIPROT ID:

Q6ZSM3

### Full Name:

solute carrier family 16, member 12 (monocarboxylic acid transporter 12)

### Calculated MW:

53 kDa

### Observed MW:

53-56 kDa

### Purification Method:

Antigen affinity purification

### Recommended Dilutions:

WB 1:500-1:1000

IHC 1:50-1:500

## Applications

### Tested Applications:

WB, IHC, ELISA

### Cited Applications:

WB, IHC

### Species Specificity:

human, mouse

### Cited Species:

human, xenopus

### Positive Controls:

WB: mouse kidney tissue,

IHC: human stomach cancer tissue, human kidney tissue, human testis tissue, mouse kidney tissue

**Note-IHC: suggested antigen retrieval with TE buffer pH 9.0; (\*) Alternatively, antigen retrieval may be performed with citrate buffer pH 6.0**

## Background Information

SLC16A12, also named as MCT12 and CJMG, belongs to the major facilitator superfamily and Monocarboxylate porter (TC 2.A.1.13) family. It is a proton-linked monocarboxylate transporter. SLC16A12 catalyzes the rapid transport across the plasma membrane of many monocarboxylates. The antibody is specific to SLC16A12.

## Notable Publications

Author	Pubmed ID	Journal	Application
Yuya Futagi	31784090	Biochem Biophys Res Commun	WB
Jie Mei	31348313	Medicine (Baltimore)	IHC

## Storage

### Storage:

Store at -20°C. Stable for one year after shipment.

### Storage Buffer:

PBS with 0.02% sodium azide and 50% glycerol pH 7.3.

Aliquoting is unnecessary for -20°C storage

\*\*\* 20ul sizes contain 0.1% BSA

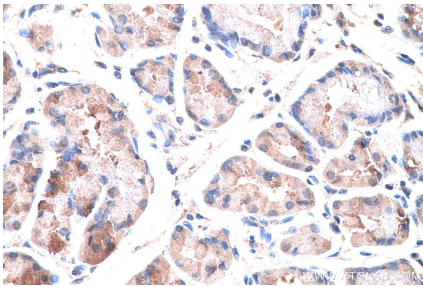
For technical support and original validation data for this product please contact:

T: 1 (888) 4PTGLAB (1-888-478-4522) (toll free in USA), or 1(312) 455-8498 (outside USA)

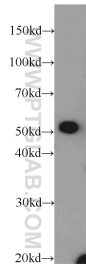
E: [proteintech@ptglab.com](mailto:proteintech@ptglab.com)  
W: [ptglab.com](http://ptglab.com)

This product is exclusively available under Proteintech Group brand and is not available to purchase from any other manufacturer.

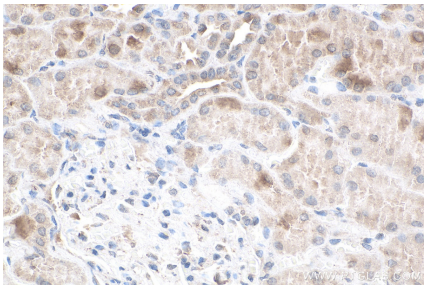
Selected Validation Data



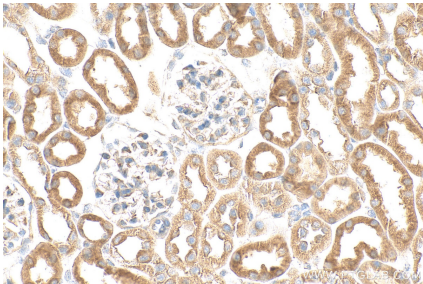
Immunohistochemical analysis of paraffin-embedded human stomach cancer tissue slide using 20553-1-AP (SLC16A12 antibody) at dilution of 1:200 (under 40x lens). Heat mediated antigen retrieval with Tris-EDTA buffer (pH 9.0).



mouse kidney tissue were subjected to SDS PAGE followed by western blot with 20553-1-AP (SLC16A12 antibody) at dilution of 1:100 incubated at room temperature for 1.5 hours.



Immunohistochemical analysis of paraffin-embedded human kidney tissue slide using 20553-1-AP (SLC16A12 antibody) at dilution of 1:200 (under 40x lens). Heat mediated antigen retrieval with Tris-EDTA buffer (pH 9.0).



Immunohistochemical analysis of paraffin-embedded mouse kidney tissue slide using 20553-1-AP (SLC16A12 antibody) at dilution of 1:200 (under 40x lens). Heat mediated antigen retrieval with Tris-EDTA buffer (pH 9.0).