

For Research Use Only

# POLR1A Polyclonal antibody

Catalog Number: 20595-1-AP

3 Publications



## Basic Information

### Catalog Number:

20595-1-AP

### Size:

150ul, Concentration: 500 ug/ml by Nanodrop and 307 ug/ml by Bradford method using BSA as the standard;

### Source:

Rabbit

### Isotype:

IgG

### Immunogen Catalog Number:

AG14543

### GenBank Accession Number:

BC017115

### GeneID (NCBI):

25885

### UNIPROT ID:

O95602

### Full Name:

polymerase (RNA) I polypeptide A, 194kDa

### Calculated MW:

1720 aa, 195 kDa

### Observed MW:

190-195 kDa

### Purification Method:

Antigen affinity purification

### Recommended Dilutions:

WB 1:500-1:2000

IP 0.5-4.0 ug for 1.0-3.0 mg of total protein lysate

## Applications

### Tested Applications:

WB, IP, ELISA

### Cited Applications:

WB, IP

### Species Specificity:

human

### Cited Species:

human

### Positive Controls:

WB : HeLa cells, HEK-293 cells, HepG2 cells

IP : HeLa cells,

## Background Information

POLR1A, DNA-directed RNA polymerase I subunit RPA1, is a DNA-dependent RNA polymerase catalyzes the transcription of DNA into RNA. RNA polymerase I (Pol I) located in the nucleolus and transcribes class I genes, which code for large ribosomal RNA. Different subunits of the Pol I transcription are targets of various physiological stimuli, which suggests that multiple signaling pathways are involved in carrying out Pol I transcription. Together with the second largest subunit, it is the catalytic core component of RNA polymerase I that synthesizes ribosomal RNA precursors.

## Notable Publications

Author	Pubmed ID	Journal	Application
Sijie Liu	33626331	Cell	
Chaoshen Wu	34904330	Cancer Sci	IP
Jia-Lin Yang	39060175	J Neurosci	WB

## Storage

### Storage:

Store at -20°C. Stable for one year after shipment.

### Storage Buffer:

PBS with 0.02% sodium azide and 50% glycerol, pH7.3

Aliquoting is unnecessary for -20°C storage

\*\*\* 20ul sizes contain 0.1% BSA

For technical support and original validation data for this product please contact:

T: 1 (888) 4PTGLAB (1-888-478-4522) (toll free in USA), or 1(312) 455-8498 (outside USA)

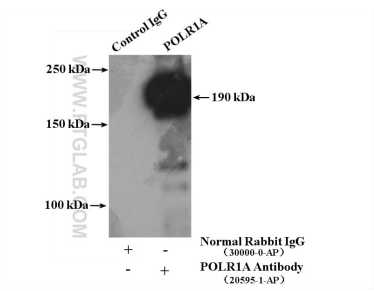
E: [proteintech@ptglab.com](mailto:proteintech@ptglab.com)  
W: [ptglab.com](http://ptglab.com)

This product is exclusively available under Proteintech Group brand and is not available to purchase from any other manufacturer.

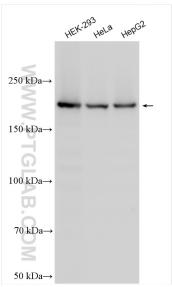
Selected Validation Data



HeLa cells were subjected to SDS PAGE followed by western blot with 20595-1-AP (POLR1A antibody) at dilution of 1:1000 incubated at room temperature for 1.5 hours.



IP result of anti-POLR1A (IP:20595-1-AP, 4ug; Detection:20595-1-AP 1:300) with HeLa cells lysate 2400ug.



Various lysates were subjected to SDS PAGE followed by western blot with 20595-1-AP (POLR1A antibody) at dilution of 1:3000 incubated at room temperature for 1.5 hours.