

For Research Use Only

# BTN2A1 Polyclonal antibody

Catalog Number: 20596-1-AP



## Basic Information

### Catalog Number:

20596-1-AP

### Size:

150ul , Concentration: 550 ug/ml by Nanodrop and 380 ug/ml by Bradford method using BSA as the standard;

### Source:

Rabbit

### Isotype:

IgG

### Immunogen Catalog Number:

AG14545

### GenBank Accession Number:

BC016661

### GeneID (NCBI):

11120

### UNIPROT ID:

Q7KYR7

### Full Name:

butyrophilin, subfamily 2, member A1

### Calculated MW:

60 kDa

### Observed MW:

69 kDa

### Purification Method:

Antigen affinity purification

### Recommended Dilutions:

WB 1:500-1:3000

## Applications

### Tested Applications:

WB, ELISA

### Species Specificity:

human, mouse, rat

### Positive Controls:

WB : Jurkat cells, HeLa cells, MCF-7 cells, mouse spleen tissue, rat spleen tissue

## Background Information

BTN2A1, also named as BT2.1, BTF1 is a 527 amino acid protein, which belongs to the immunoglobulin superfamily. BTN2A1 is highly expressed in brain, bone marrow, small intestine, muscle, spleen and pancreas and moderate expression was seen in lung, liver and kidney. The calculated molecular weight of BTN2A1 is 59 kDa, but glycosylation of BTN2A1 is about 69 kDa. (PMID: 17785817)

## Storage

### Storage:

Store at -20°C. Stable for one year after shipment.

### Storage Buffer:

PBS with 0.02% sodium azide and 50% glycerol pH 7.3.

Aliquoting is unnecessary for -20°C storage

\*\*\* 20ul sizes contain 0.1% BSA

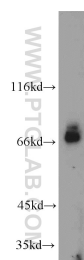
For technical support and original validation data for this product please contact:

T: 1 (888) 4PTGLAB (1-888-478-4522) (toll free in USA), or 1(312) 455-8498 (outside USA)

E: [proteintech@ptglab.com](mailto:proteintech@ptglab.com)  
W: [ptglab.com](http://ptglab.com)

This product is exclusively available under Proteintech Group brand and is not available to purchase from any other manufacturer.

## Selected Validation Data



Jurkat cells were subjected to SDS PAGE followed by western blot with 20596-1-AP (BTN2A1 antibody) at dilution of 1:600 incubated at room temperature for 1.5 hours.