

For Research Use Only

CHCHD6 Polyclonal antibody

Catalog Number: 20639-1-AP

Featured Product

14 Publications



Basic Information

Catalog Number:

20639-1-AP

Size:

150ul, Concentration: 800 ug/ml by Nanodrop;

Source:

Rabbit

Isotype:

IgG

Immunogen Catalog Number:

AG14700

GenBank Accession Number:

BC006123

GeneID (NCBI):

84303

UNIPROT ID:

Q9BRQ6

Full Name:

coiled-coil-helix-coiled-coil-helix domain containing 6

Calculated MW:

235 aa, 26 kDa

Observed MW:

26-29 kDa

Purification Method:

Antigen affinity purification

Recommended Dilutions:

WB 1:1000-1:4000

IP 0.5-4.0 ug for 1.0-3.0 mg of total protein lysate

IHC 1:20-1:200

IF/ICC 1:200-1:800

Applications

Tested Applications:

WB, IHC, IF/ICC, IP, ELISA

Cited Applications:

WB, IF

Species Specificity:

human

Cited Species:

human, mouse

Note-IHC: suggested antigen retrieval with TE buffer pH 9.0; (*) Alternatively, antigen retrieval may be performed with citrate buffer pH 6.0

Positive Controls:

WB : A431 cells, HeLa cells, Jurkat cells

IP : Jurkat cells,

IHC : human stomach tissue,

IF/ICC : MCF-7 cells,

Notable Publications

Author	Pubmed ID	Journal	Application
Yutong Shang	36104602	Acta Neuropathol	WB,IF
Virginia Guarani	27623147	Elife	WB
Chengli Ding	26530328	Sci Rep	WB

Storage

Storage:

Store at -20°C. Stable for one year after shipment.

Storage Buffer:

PBS with 0.02% sodium azide and 50% glycerol pH 7.3.

Aliquoting is unnecessary for -20°C storage

*** 20ul sizes contain 0.1% BSA

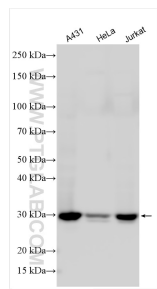
For technical support and original validation data for this product please contact:

T: 1 (888) 4PTGLAB (1-888-478-4522) (toll free in USA), or 1(312) 455-8498 (outside USA)

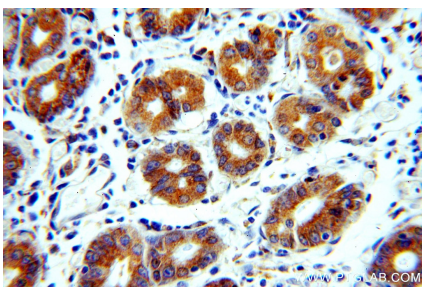
E: proteintech@ptglab.com
W: ptglab.com

This product is exclusively available under Proteintech Group brand and is not available to purchase from any other manufacturer.

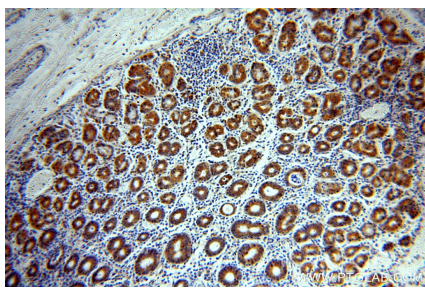
Selected Validation Data



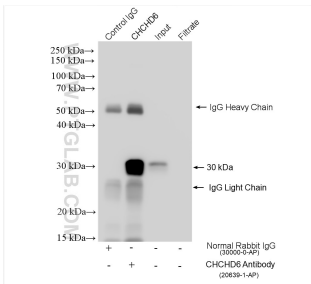
Various lysates were subjected to SDS PAGE followed by western blot with 20639-1-AP (CHCHD6 antibody) at dilution of 1:2000 incubated at room temperature for 1.5 hours.



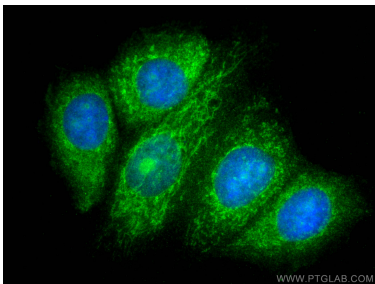
Immunohistochemical analysis of paraffin-embedded human stomach using 20639-1-AP (CHCHD6 antibody) at dilution of 1:100 (under 40x lens).



Immunohistochemical analysis of paraffin-embedded human stomach using 20639-1-AP (CHCHD6 antibody) at dilution of 1:100 (under 10x lens).



IP result of anti-CHCHD6 (IP:20639-1-AP, 4ug; Detection:20639-1-AP 1:2000) with Jurkat cells lysate 1560 ug.



Immunofluorescent analysis of (4% PFA) fixed MCF-7 cells using CHCHD6 antibody (20639-1-AP) at dilution of 1:400 and CoraLite®488-Conjugated Goat Anti-Rabbit IgG(H+L).