

For Research Use Only

CTR9 Polyclonal antibody

Catalog Number: 20672-1-AP



Basic Information

Catalog Number: 20672-1-AP	GenBank Accession Number: NM_014633	Purification Method: Antigen affinity purification
Size: 150ul , Concentration: 550 µg/ml by Nanodrop and 333 µg/ml by Bradford method using BSA as the standard;	GeneID (NCBI): 9646	Recommended Dilutions: WB 1:500-1:1000 IHC 1:20-1:200
Source: Rabbit	Full Name: Ctr9, Paf1/RNA polymerase II complex component, homolog (S. cerevisiae)	
Isotype: IgG	Calculated MW: 134 kDa	
	Observed MW: 130-150 kDa	

Applications

Tested Applications: IHC, WB, ELISA	Positive Controls:
Species Specificity: human, mouse	WB : HeLa cells, IHC : human ovary tumor tissue,
Note-IHC: suggested antigen retrieval with TE buffer pH 9.0; (*) Alternatively, antigen retrieval may be performed with citrate buffer pH 6.0	

Background Information

CTR9, also named as KIAA0155 and SH2BP1, contains 16 TPR repeats. It is widely expressed. The antibody recognizes the C-term of CTR9.

Storage

Storage:
Store at -20°C. Stable for one year after shipment.
Storage Buffer:
PBS with 0.02% sodium azide and 50% glycerol pH 7.3.
Aliquoting is unnecessary for -20°C storage

*** 20ul sizes contain 0.1% BSA

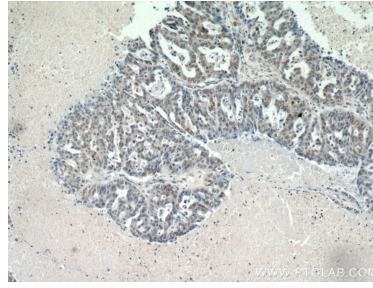
For technical support and original validation data for this product please contact:
T: 1 (888) 4PTGLAB (1-888-478-4522) (toll free in USA), or 1(312) 455-8498 (outside USA)
E: proteintech@ptglab.com
W: ptglab.com

This product is exclusively available under Proteintech Group brand and is not available to purchase from any other manufacturer.

Selected Validation Data



HeLa cells were subjected to SDS PAGE followed by western blot with 20672-1-AP (CTR9 antibody) at dilution of 1:500 incubated at room temperature for 1.5 hours.



Immunohistochemical analysis of paraffin-embedded human ovary tumor using 20672-1-AP (CTR9 antibody) at dilution of 1:50 (under 10x lens).