

For Research Use Only

# GHRHR Polyclonal antibody

Catalog Number: 20715-1-AP

1 Publications



## Basic Information

### Catalog Number:

20715-1-AP

### Size:

150ul, Concentration: 400 ug/ml by Nanodrop and 307 ug/ml by Bradford method using BSA as the standard;

### Source:

Rabbit

### Isotype:

IgG

### GenBank Accession Number:

NM\_000823

### GeneID (NCBI):

2692

### UNIPROT ID:

Q02643

### Full Name:

GHRH receptor

### Calculated MW:

47 kDa

### Observed MW:

48 kDa

### Purification Method:

Antigen affinity purification

### Recommended Dilutions:

WB 1:500-1:1000

IHC 1:50-1:500

## Applications

### Tested Applications:

WB, IHC, ELISA

### Cited Applications:

IF

### Species Specificity:

human, mouse, rat

### Cited Species:

mouse

### Positive Controls:

WB : HEK-293 cells,

IHC : human kidney tissue,

**Note-IHC: suggested antigen retrieval with TE buffer pH 9.0; (\*) Alternatively, antigen retrieval may be performed with citrate buffer pH 6.0**

## Background Information

GHRHR, also named GRFR, belongs to the G-protein coupled receptor 2 family. It is a GRF receptor coupled to G proteins that activate adenylyl cyclase. GHRHR stimulates somatotroph cell growth, GH gene transcription, and GH secretion. The antibody is specific to GHRHR. The antibody is specific to GHRHR.

## Notable Publications

Author	Pubmed ID	Journal	Application
Kai Li	38488559	Neural Regen Res	IF

## Storage

### Storage:

Store at -20°C. Stable for one year after shipment.

### Storage Buffer:

PBS with 0.02% sodium azide and 50% glycerol pH 7.3.

Aliquoting is unnecessary for -20°C storage

\*\*\* 20ul sizes contain 0.1% BSA

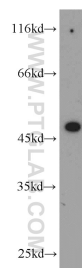
For technical support and original validation data for this product please contact:

T: 1 (888) 4PTGLAB (1-888-478-4522) (toll free in USA), or 1(312) 455-8498 (outside USA)

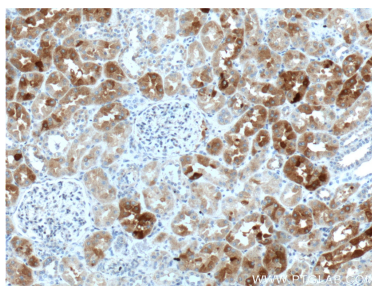
E: [proteintech@ptglab.com](mailto:proteintech@ptglab.com)  
W: [ptglab.com](http://ptglab.com)

This product is exclusively available under Proteintech Group brand and is not available to purchase from any other manufacturer.

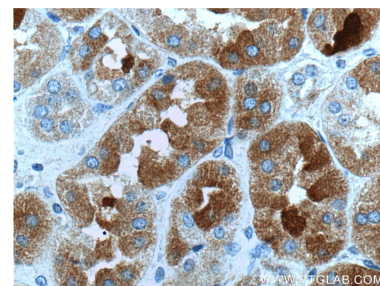
## Selected Validation Data



HEK-293 cells were subjected to SDS PAGE followed by western blot with 20715-1-AP (GHRHR antibody) at dilution of 1:500 incubated at room temperature for 1.5 hours.



Immunohistochemical analysis of paraffin-embedded human kidney tissue slide using 20715-1-AP (GHRHR Antibody) at dilution of 1:100 (under 10x lens).



Immunohistochemical analysis of paraffin-embedded human kidney tissue slide using 20715-1-AP (GHRHR Antibody) at dilution of 1:100 (under 40x lens).