

For Research Use Only

TMC1 Polyclonal antibody

Catalog Number: 20718-1-AP

1 Publications



Basic Information

Catalog Number:

20718-1-AP

Size:

150ul, Concentration: 600 ug/ml by Nanodrop and 333 ug/ml by Bradford method using BSA as the standard;

Source:

Rabbit

Isotype:

IgG

GenBank Accession Number:

NM_138691

GeneID (NCBI):

117531

UNIPROT ID:

Q8TDI8

Full Name:

transmembrane channel-like 1

Calculated MW:

88 kDa

Observed MW:

88 kDa

Purification Method:

Antigen affinity purification

Recommended Dilutions:

WB 1:300-1:1000

IHC 1:20-1:200

IF-P 1:50-1:500

Applications

Tested Applications:

WB, IHC, IF-P, ELISA

Cited Applications:

WB

Species Specificity:

human, mouse, rat

Cited Species:

mouse

Positive Controls:

WB : mouse brain tissue,

IHC : human placenta tissue,

IF-P : mouse brain tissue,

Note-IHC: suggested antigen retrieval with TE buffer pH 9.0; (*) Alternatively, antigen retrieval may be performed with citrate buffer pH 6.0

Background Information

Transmembrane channel-like protein 1 (TMC1), is an integral membrane protein with six transmembrane domains and cytoplasmically oriented N- and C- termini (PMID: 20672865). Human TMC1 and mouse Tmc1 mRNA expression were detected in human fetal cochlea and inner-ear tissue of postnatal mouse, respectively. TMC1 is required for cochlear hair-cell function (PMID: 11850618). It is a component of hair cell transduction channels and contributes to permeation properties (PMID: 23871232). Mutations in TMC1 gene can cause progressive postlingual hearing loss and profound prelingual deafness (PMID: 11850618). The antibody is specific to TMC1.

Notable Publications

| Author | Pubmed ID | Journal | Application |
|-----------------|-----------|---------------|-------------|
| Patrizia Romani | 39433949 | Nat Cell Biol | WB |

Storage

Storage:

Store at -20°C. Stable for one year after shipment.

Storage Buffer:

PBS with 0.02% sodium azide and 50% glycerol

Aliquoting is unnecessary for -20°C storage

*** 20ul sizes contain 0.1% BSA

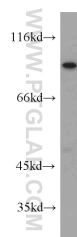
For technical support and original validation data for this product please contact:

T: 1 (888) 4PTGLAB (1-888-478-4522) (toll free in USA), or 1(312) 455-8498 (outside USA)

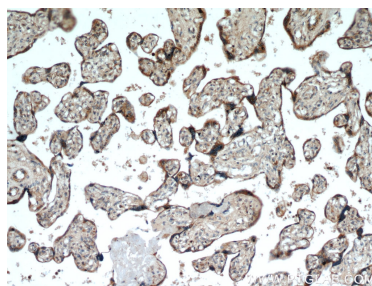
E: proteintech@ptglab.com
W: ptglab.com

This product is exclusively available under Proteintech Group brand and is not available to purchase from any other manufacturer.

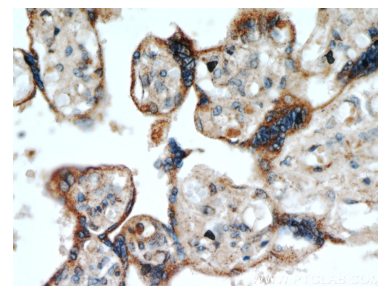
Selected Validation Data



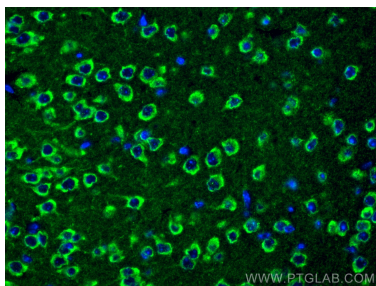
mouse brain tissue were subjected to SDS PAGE followed by western blot with 20718-1-AP (TMC1 antibody) at dilution of 1:300 incubated at room temperature for 1.5 hours.



Immunohistochemical analysis of paraffin-embedded human placenta using 20718-1-AP (TMC1 antibody) at dilution of 1:100 (under 10x lens).



Immunohistochemical analysis of paraffin-embedded human placenta using 20718-1-AP (TMC1 antibody) at dilution of 1:100 (under 40x lens).



Immunofluorescent analysis of (4% PFA) fixed mouse brain tissue using TMC1 antibody (20718-1-AP) at dilution of 1:200 and CoraLite®488-Conjugated Goat Anti-Rabbit IgG(H+L).