

For Research Use Only

# EZH1 Polyclonal antibody

Catalog Number: 20852-1-AP

Featured Product

8 Publications



## Basic Information

Catalog Number:

20852-1-AP

Size:

150ul, Concentration: 1000 ug/ml by Nanodrop;

Source:

Rabbit

Isotype:

IgG

Immunogen Catalog Number:

AG14732

GenBank Accession Number:

BC015882

GeneID (NCBI):

2145

UNIPROT ID:

Q92800

Full Name:

enhancer of zeste homolog 1 (Drosophila)

Calculated MW:

747 aa, 85 kDa

Observed MW:

80-95 kDa

Purification Method:

Antigen affinity purification

Recommended Dilutions:

WB 1:300-1:1000

## Applications

Tested Applications:

WB, ELISA

Cited Applications:

WB, IF

Species Specificity:

human, mouse

Cited Species:

human, mouse, chicken

Positive Controls:

WB : RAW 264.7 cells, HL-60 cells, HEK-293T cells

## Notable Publications

Author	Pubmed ID	Journal	Application
Yichao Du	34512864	Oxid Med Cell Longev	WB
Cheng Wang	35623249	Eur J Med Chem	WB
Shun Utsunomiya	33678755	Drug Discov Ther	WB

## Storage

Storage:

Store at -20°C. Stable for one year after shipment.

Storage Buffer:

PBS with 0.02% sodium azide and 50% glycerol pH 7.3.

Aliquoting is unnecessary for -20°C storage

\*\*\* 20ul sizes contain 0.1% BSA

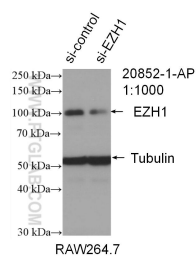
For technical support and original validation data for this product please contact:

T: 1 (888) 4PTGLAB (1-888-478-4522) (toll free in USA), or 1(312) 455-8498 (outside USA)

E: [proteintech@ptglab.com](mailto:proteintech@ptglab.com)  
W: [ptglab.com](http://ptglab.com)

This product is exclusively available under Proteintech Group brand and is not available to purchase from any other manufacturer.

## Selected Validation Data



WB result of EZH1 antibody (20852-1-AP; 1:1000; incubated at room temperature for 1.5 hours) with sh-Control and sh-EZH1 transfected RAW 264.7 cells.