

# TPH1 Polyclonal antibody

Catalog Number: 20879-1-AP

## Basic Information

**Catalog Number:**

20879-1-AP

**Size:**

150ul , Concentration: 327 µg/ml by Bradford method using BSA as the standard;

**Source:**

Rabbit

**Isotype:**

IgG

**Immunogen Catalog Number:**

AG14978

**GenBank Accession Number:**

BC106739

**GeneID (NCBI):**

7166

**UNIPROT ID:**

P17752

**Full Name:**

tryptophan hydroxylase 1

**Calculated MW:**

466 aa, 53 kDa

**Observed MW:**

51 kDa

**Purification Method:**

Antigen affinity purification

**Recommended Dilutions:**

WB 1:200-1:1000

## Applications

**Tested Applications:**

WB, ELISA

**Species Specificity:**

human, mouse

**Positive Controls:**

WB : SH-SY5Y cells,

## Background Information

Tryptophan hydroxylase 1 (TPH1) catalyzes the rate-limiting step in the synthesis of serotonin in the periphery. Recently, it has been shown that expression of the tryptophan hydroxylase 1 gene is increased in lungs and pulmonary endothelial cells from patients with idiopathic pulmonary arterial hypertension. It catalyzes the bipterin-dependent monooxygenation of tryptophan to 5-hydroxytryptophan (5HT), which is subsequently decarboxylated to form the neurotransmitter serotonin. The protein has low expression.

## Storage

**Storage:**

Store at -20°C. Stable for one year after shipment.

**Storage Buffer:**

PBS with 0.02% sodium azide and 50% glycerol pH 7.3.

Aliquoting is unnecessary for -20°C storage

\*\*\* 20ul sizes contain 0.1% BSA

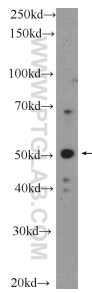
For technical support and original validation data for this product please contact:

T: 1 (888) 4PTGLAB (1-888-478-4522) (toll free in USA), or 1(312) 455-8498 (outside USA)

E: [proteintech@ptglab.com](mailto:proteintech@ptglab.com)  
W: [ptglab.com](http://ptglab.com)

This product is exclusively available under Proteintech Group brand and is not available to purchase from any other manufacturer.

## Selected Validation Data



SH-SY5Y cells were subjected to SDS PAGE followed by western blot with 20879-1-AP (TPH1 Antibody) at dilution of 1:300 incubated at room temperature for 1.5 hours.