

For Research Use Only

C3orf21 Polyclonal antibody

Catalog Number: 20913-1-AP **1 Publications**



Basic Information

Catalog Number: 20913-1-AP	GenBank Accession Number: BC039067	Purification Method: Antigen affinity purification
Size: 150ul , Concentration: 800 µg/ml by Nanodrop and 540 µg/ml by Bradford method using BSA as the standard;	GeneID (NCBI): 152002	Recommended Dilutions: WB 1:500-1:1000 IHC 1:20-1:200 IF 1:20-1:200
Source: Rabbit	Full Name: chromosome 3 open reading frame 21	
Isotype: IgG	Calculated MW: 393 aa, 44 kDa	
Immunogen Catalog Number: AG15043	Observed MW: 44 kDa	

Applications

Tested Applications: IF, IHC, WB, ELISA	Positive Controls: WB : HeLa cells, IHC : human prostate hyperplasia tissue, IF : HeLa cells,
Cited Applications: WB	
Species Specificity: human, mouse, rat	
Cited Species: human	
Note-IHC: suggested antigen retrieval with TE buffer pH 9.0; (*) Alternatively, antigen retrieval may be performed with citrate buffer pH 6.0	

Background Information

Notable Publications

Author	Pubmed ID	Journal	Application
Hu Cai	34026596	Front Oncol	WB

Storage

Storage:
Store at -20°C. Stable for one year after shipment.
Storage Buffer:
PBS with 0.02% sodium azide and 50% glycerol pH 7.3.
Aliquoting is unnecessary for -20°C storage

*** 20ul sizes contain 0.1% BSA

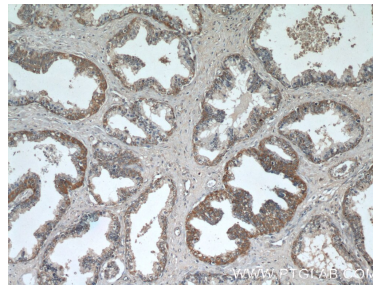
For technical support and original validation data for this product please contact:
T: 1 (888) 4PTGLAB (1-888-478-4522) (toll free in USA), or 1(312) 455-8498 (outside USA) E: proteintech@ptglab.com W: ptglab.com

This product is exclusively available under Proteintech Group brand and is not available to purchase from any other manufacturer.

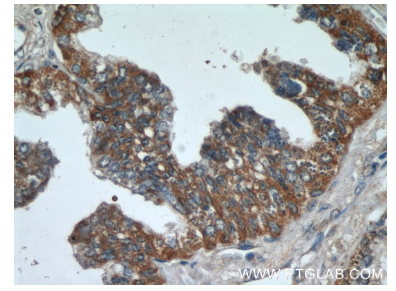
Selected Validation Data



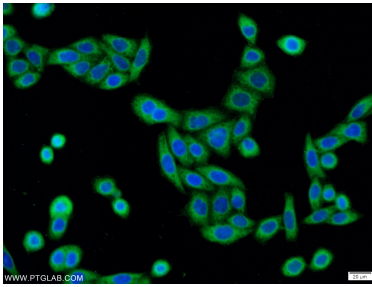
HeLa cells were subjected to SDS PAGE followed by western blot with 20913-1-AP (C3orf21 antibody) at dilution of 1:800 incubated at room temperature for 1.5 hours.



Immunohistochemical analysis of paraffin-embedded human prostate hyperplasia using 20913-1-AP (C3orf21 antibody) at dilution of 1:50 (under 10x lens).



Immunohistochemical analysis of paraffin-embedded human prostate hyperplasia using 20913-1-AP (C3orf21 antibody) at dilution of 1:50 (under 40x lens).



Immunofluorescent analysis of HeLa cells using 20913-1-AP (C3orf21 antibody) at dilution of 1:50 and Alexa Fluor 488-conjugated AffiniPure Goat Anti-Rabbit IgG(H+L).