

For Research Use Only

C7orf58 Polyclonal antibody

Catalog Number: 20924-1-AP **1 Publications**



Basic Information

Catalog Number: 20924-1-AP	GenBank Accession Number: BC030538	Purification Method: Antigen affinity purification
Size: 150ul , Concentration: 400 µg/ml by Nanodrop and 267 µg/ml by Bradford method using BSA as the standard;	GeneID (NCBI): 79974	Recommended Dilutions: WB 1:500-1:3000 IHC 1:20-1:200 IF 1:20-1:200
Source: Rabbit	Full Name: chromosome 7 open reading frame 58	
Isotype: IgG	Calculated MW: 1026 aa, 117 kDa	
Immunogen Catalog Number: AG15193	Observed MW: 89 kDa	

Applications

Tested Applications: IF, IHC, WB, ELISA	Positive Controls: WB : A375 cells, A431 cells, HEK-293 cells, HeLa cells, L02 cells IHC : human stomach tissue, IF : A375 cells,
Cited Applications: WB	
Species Specificity: human	
Cited Species: human	
Note-IHC: suggested antigen retrieval with TE buffer pH 9.0; (*) Alternatively, antigen retrieval may be performed with citrate buffer pH 6.0	

Background Information

Notable Publications

Author	Pubmed ID	Journal	Application
Siwei Pan	37771777	Theranostics	WB

Storage

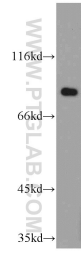
Storage:
Store at -20°C. Stable for one year after shipment.
Storage Buffer:
PBS with 0.02% sodium azide and 50% glycerol pH 7.3.
Aliquoting is unnecessary for -20°C storage

*** 20ul sizes contain 0.1% BSA

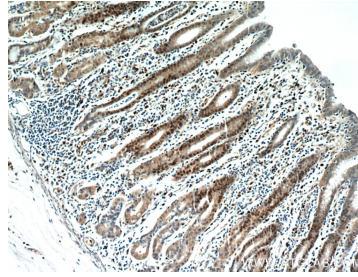
For technical support and original validation data for this product please contact:
T: 1 (888) 4PTGLAB (1-888-478-4522) (toll free in USA), or 1(312) 455-8498 (outside USA)
E: proteintech@ptglab.com
W: ptglab.com

This product is exclusively available under Proteintech Group brand and is not available to purchase from any other manufacturer.

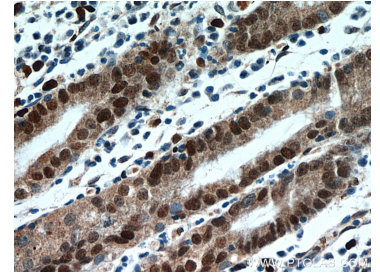
Selected Validation Data



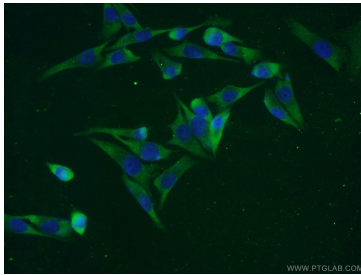
A375 cells were subjected to SDS PAGE followed by western blot with 20924-1-AP (C7orf58 antibody) at dilution of 1:500 incubated at room temperature for 1.5 hours.



Immunohistochemical analysis of paraffin-embedded human stomach using 20924-1-AP (C7orf58 antibody) at dilution of 1:100 (under 10x lens).



Immunohistochemical analysis of paraffin-embedded human stomach using 20924-1-AP (C7orf58 antibody) at dilution of 1:100 (under 40x lens).



Immunofluorescent analysis of A375 cells using 20924-1-AP (C7orf58 antibody) at dilution of 1:50 and Alexa Fluor 488-conjugated AffiniPure Goat Anti-Rabbit IgG(H+L).