

For Research Use Only

PHIP Polyclonal antibody

Catalog Number: 20933-1-AP **3 Publications**



Basic Information

Catalog Number:

20933-1-AP

Size:

150ul , Concentration: 900 µg/ml by Nanodrop;

Source:

Rabbit

Isotype:

IgG

Immunogen Catalog Number:

AG14968

GenBank Accession Number:

BC008909

GeneID (NCBI):

55023

UNIPROT ID:

Q8WWQ0

Full Name:

pleckstrin homology domain interacting protein

Calculated MW:

1821 aa, 207 kDa

Observed MW:

207 kDa

Purification Method:

Antigen affinity purification

Recommended Dilutions:

WB 1:1000-1:4000

IP 0.5-4.0 ug for 1.0-3.0 mg of total protein lysate

IF 1:50-1:500

Applications

Tested Applications:

IF, IP, WB, ELISA

Cited Applications:

ChIP, IF, WB

Species Specificity:

human, mouse

Cited Species:

human

Positive Controls:

WB : HepG2 cells, A375 cells, Jurkat cells, MCF-7 cells

IP : A375 cells,

IF : MCF-7 cells,

Background Information

PHIP is a protein that binds to the insulin receptor substrate 1 protein and regulates glucose transporter translocation in skeletal muscle cells. PHIP may also regulate growth and survival of pancreatic beta cells. Elevated copy number of this gene may be associated with melanoma severity and the encoded protein may promote melanoma metastasis in human patients.

Notable Publications

Author	Pubmed ID	Journal	Application
Ganglin Ren	37742010	BMC Cancer	WB
Jae-Hyun Jo	37612584	Cell Commun Signal	ChIP
Gaëlle Marenne	32492392	Cell Metab	WB,IF

Storage

Storage:

Store at -20°C. Stable for one year after shipment.

Storage Buffer:

PBS with 0.02% sodium azide and 50% glycerol pH 7.3.

Aliquoting is unnecessary for -20°C storage

*** 20ul sizes contain 0.1% BSA

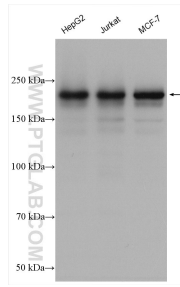
For technical support and original validation data for this product please contact:

T: 1 (888) 4PTGLAB (1-888-478-4522) (toll free in USA), or 1(312) 455-8498 (outside USA)

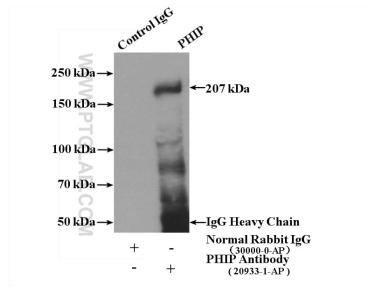
E: proteintech@ptglab.com
W: ptglab.com

This product is exclusively available under Proteintech Group brand and is not available to purchase from any other manufacturer.

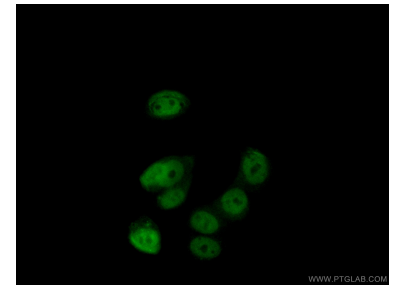
Selected Validation Data



Various lysates were subjected to SDS PAGE followed by western blot with 20933-1-AP (PHIP antibody) at dilution of 1:2000 incubated at room temperature for 1.5 hours.



IP result of anti-PHIP (IP:20933-1-AP, 4ug; Detection:20933-1-AP 1:3000) with A375 cells lysate 3600ug.



Immunofluorescent analysis of (4% PFA) fixed MCF-7 cells using 20933-1-AP (PHIP antibody) at dilution of 1:50 and Alexa Fluor 488-Conjugated AffiniPure Goat Anti-Rabbit IgG(H+L).