

CRHR1 Polyclonal antibody

Catalog Number: 20967-1-AP

10 Publications

Basic Information

Catalog Number: 20967-1-AP	GenBank Accession Number: NM_004382	Purification Method: Antigen affinity purification
Size: 150ul , Concentration: 500 µg/ml by Nanodrop;	GeneID (NCBI): 1394	Recommended Dilutions: WB 1:200-1:1000
Source: Rabbit	Full Name: corticotropin releasing hormone receptor 1	
Isotype: IgG	Calculated MW: 48 kDa	
	Observed MW: 46-55 kDa	

Applications

Tested Applications: WB, ELISA	Positive Controls: WB : HeLa cells, SH-SY5Y cells
Cited Applications: IF, WB	
Species Specificity: human	
Cited Species: human	

Background Information

Corticotropin-releasing hormone (CRH, also known as Corticotropin-releasing factor, CRF) is a 41 amino acid peptide hormone and a key regulator of the stress response. CRH and the related urocortin peptides (UCN, UCN2 and UCN3) mediate their actions through two mammalian receptor subtypes, CRHR1 and CRHR2 (PMID: 23863939). CRHR1 (also known as CRFR1) exhibits high affinity towards CRH and UCN but low affinity towards UCN2 and no affinity towards UCN3 (PMID: 22684850). The activity of this receptor is mediated by G proteins which activate adenylyl cyclase. Widely distributed throughout the brain, CRHR1 critically controls behavioral adaptation to stress and is causally linked to emotional disorders (PMID: 21885734). Alternative splicing results in multiple transcript variants encoding distinct isoforms of CRHR1. This antibody raised against a synthesized peptide corresponding to amino acid residues 148-165 of isoform CRF-R1 can only recognize isoform CRF-R1.

Notable Publications

Author	Pubmed ID	Journal	Application
Shao-Jun Chen	25146699	Proc Natl Acad Sci U S A	IF
Shuai Lian	30423388	Behav Brain Res	WB
Chunyang Zhu	31746413	Int J Mol Med	WB

Storage

Storage:
Store at -20°C. Stable for one year after shipment.

Storage Buffer:
PBS with 0.02% sodium azide and 50% glycerol pH 7.3.

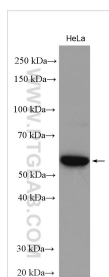
Aliquoting is unnecessary for -20°C storage

*** 20ul sizes contain 0.1% BSA

For technical support and original validation data for this product please contact:
 T: 1 (888) 4PTGLAB (1-888-478-4522) (toll free in USA), or 1(312) 455-8498 (outside USA)
 E: proteintech@ptglab.com
 W: ptglab.com

This product is exclusively available under Proteintech Group brand and is not available to purchase from any other manufacturer.

Selected Validation Data



HeLa cells were subjected to SDS PAGE followed by western blot with 20967-1-AP (CRHR1 antibody) at dilution of 1:400 incubated at room temperature for 1.5 hours.