

For Research Use Only

# INSC Polyclonal antibody

Catalog Number: 20973-1-AP

1 Publications



## Basic Information

### Catalog Number:

20973-1-AP

### Size:

150ul, Concentration: 550 ug/ml by Nanodrop and 367 ug/ml by Bradford method using BSA as the standard;

### Source:

Rabbit

### Isotype:

IgG

### GenBank Accession Number:

NM\_001031853

### GeneID (NCBI):

387755

### UNIPROT ID:

Q1MX18

### Full Name:

inscuteable homolog (Drosophila)

### Calculated MW:

63 kDa

### Observed MW:

54 kDa

### Purification Method:

Antigen affinity purification

### Recommended Dilutions:

WB 1:500-1:2000

IHC 1:20-1:200

IF/ICC 1:10-1:100

## Applications

### Tested Applications:

WB, IHC, IF/ICC, ELISA

### Cited Applications:

ChIP

### Species Specificity:

human, mouse, rat

**Note-IHC: suggested antigen retrieval with TE buffer pH 9.0; (\*) Alternatively, antigen retrieval may be performed with citrate buffer pH 6.0**

### Positive Controls:

WB : mouse liver tissue, mouse kidney tissue

IHC : human kidney tissue, human liver tissue

IF/ICC : HeLa cells,

## Background Information

INSC may function as an adapter linking the Par3 complex to the GPSM1/GPSM2 complex. It is involved in spindle orientation during mitosis it may regulate cell proliferation and differentiation in the developing nervous system. INSC may play a role in the asymmetric division of fibroblasts and participate in the process of stratification of the squamous epithelium. The antibody can recognize isoform 1, 2, 4, 5 of INSC.

## Notable Publications

Author	Pubmed ID	Journal	Application
Bhavana Gupta	34433050	Cell Rep	ChIP

## Storage

### Storage:

Store at -20°C. Stable for one year after shipment.

### Storage Buffer:

PBS with 0.02% sodium azide and 50% glycerol pH 7.3.

Aliquoting is unnecessary for -20°C storage

\*\*\* 20ul sizes contain 0.1% BSA

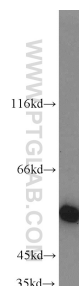
For technical support and original validation data for this product please contact:

T: 1 (888) 4PTGLAB (1-888-478-4522) (toll free in USA), or 1(312) 455-8498 (outside USA)

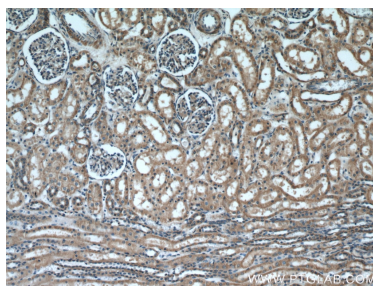
E: [proteintech@ptglab.com](mailto:proteintech@ptglab.com)  
W: [ptglab.com](http://ptglab.com)

This product is exclusively available under Proteintech Group brand and is not available to purchase from any other manufacturer.

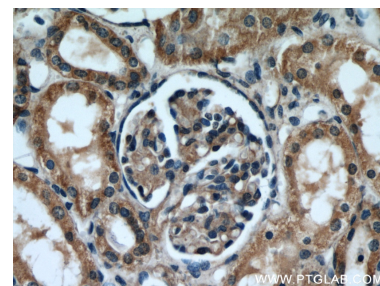
## Selected Validation Data



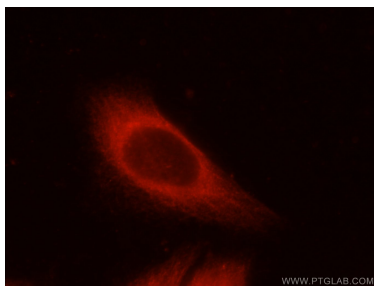
mouse liver tissue were subjected to SDS PAGE followed by western blot with 20973-1-AP (INSC antibody) at dilution of 1:1000 incubated at room temperature for 1.5 hours.



Immunohistochemical analysis of paraffin-embedded human kidney using 20973-1-AP (INSC antibody) at dilution of 1:50 (under 10x lens).



Immunohistochemical analysis of paraffin-embedded human kidney using 20973-1-AP (INSC antibody) at dilution of 1:50 (under 40x lens).



Immunofluorescent analysis of HeLa cells using 20973-1-AP (INSC antibody) at dilution of 1:25 and Rhodamine-Goat anti-Rabbit IgG.