

For Research Use Only

Cyclin T1 Polyclonal antibody

Catalog Number: 20992-1-AP

3 Publications



Basic Information

Catalog Number:

20992-1-AP

Size:

150ul, Concentration: 400 ug/ml by Nanodrop and 380 ug/ml by Bradford method using BSA as the standard;

Source:

Rabbit

Isotype:

IgG

GenBank Accession Number:

NM_001240

GeneID (NCBI):

904

UNIPROT ID:

O60563

Full Name:

cyclin T1

Calculated MW:

81 kDa

Observed MW:

81 kDa

Purification Method:

Antigen affinity purification

Recommended Dilutions:

WB 1:2000-1:16000

IHC 1:50-1:500

IF/ICC 1:50-1:500

Applications

Tested Applications:

WB, IHC, IF/ICC, ELISA

Cited Applications:

WB, IF

Species Specificity:

human

Cited Species:

human

Positive Controls:

WB : HeLa cells, A431 cells, Jurkat cells, K-562 cells, Y79 cells

IHC : human ovary cancer tissue,

IF/ICC : MCF-7 cells,

Note-IHC: suggested antigen retrieval with TE buffer pH 9.0; (*) Alternatively, antigen retrieval may be performed with citrate buffer pH 6.0

Background Information

CCNT1, also named as CycT1, belongs to the cyclin family and Cyclin C subfamily. It is a regulatory subunit of the cyclin-dependent kinase pair (CDK9/cyclin-T1) complex which also called positive transcription elongation factor B (P-TEFb). In case of HIV or SIV infections, CCNT1 binds to the transactivation domain of the viral nuclear transcriptional activator, Tat, thereby increasing Tat's affinity for the transactivating response RNA element (TAR RNA). CCNT1 serves as an essential cofactor for Tat, by promoting RNA Pol II activation, allowing transcription of viral genes. The antibody is specific to CCNT1.

Notable Publications

Author	Pubmed ID	Journal	Application
Gongwei Wu	28474697	Nat Commun	WB
Sebastian Eilebrecht	24623795	Nucleic Acids Res	WB
Ying E	37291517	BMC Cancer	WB,IF

Storage

Storage:

Store at -20°C. Stable for one year after shipment.

Storage Buffer:

PBS with 0.02% sodium azide and 50% glycerol pH 7.3.

Aliquoting is unnecessary for -20°C storage

*** 20ul sizes contain 0.1% BSA

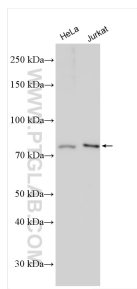
For technical support and original validation data for this product please contact:

T: 1 (888) 4PTGLAB (1-888-478-4522) (toll free in USA), or 1(312) 455-8498 (outside USA)

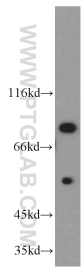
E: proteintech@ptglab.com
W: ptglab.com

This product is exclusively available under Proteintech Group brand and is not available to purchase from any other manufacturer.

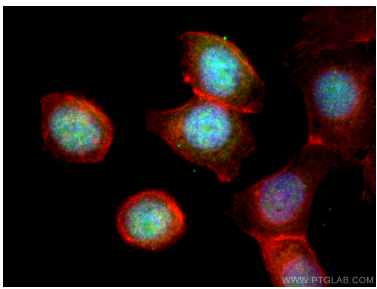
Selected Validation Data



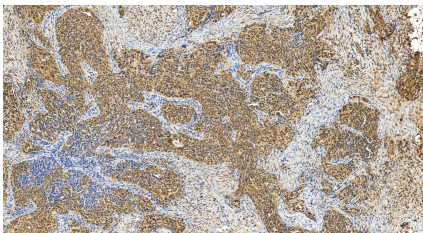
Various lysates were subjected to SDS PAGE followed by western blot with 20992-1-AP (Cyclin T1 antibody) at dilution of 1:8000 incubated at room temperature for 1.5 hours.



K-562 cells were subjected to SDS PAGE followed by western blot with 20992-1-AP (Cyclin T1 antibody) at dilution of 1:300 incubated at room temperature for 1.5 hours.



Immunofluorescent analysis of (4% PFA) fixed MCF-7 cells using Cyclin T1 antibody (20992-1-AP) at dilution of 1:200 and CoraLite@488-Conjugated AffiniPure Goat Anti-Rabbit IgG(H+L).



Immunohistochemical analysis of paraffin-embedded human ovary cancer tissue slide using 20992-1-AP (Cyclin T1 antibody) at dilution of 1:200 (under 20x lens). Heat mediated antigen retrieval with Tris-EDTA buffer (pH 9.0).