

For Research Use Only

# ENTPD8 Polyclonal antibody

Catalog Number: 21010-1-AP



## Basic Information

<b>Catalog Number:</b> 21010-1-AP	<b>GenBank Accession Number:</b> BC141810	<b>Purification Method:</b> Antigen affinity purification
<b>Size:</b> 150ul , Concentration: 450 µg/ml by Nanodrop;	<b>GeneID (NCBI):</b> 377841	<b>Recommended Dilutions:</b> WB 1:500-1:1000
<b>Source:</b> Rabbit	<b>Full Name:</b> ectonucleoside triphosphate diphosphohydrolase 8	
<b>Isotype:</b> IgG	<b>Calculated MW:</b> 495 aa, 54 kDa	
<b>Immunogen Catalog Number:</b> AG15224	<b>Observed MW:</b> 70 kDa, 54 kDa	

## Applications

<b>Tested Applications:</b> WB, ELISA	<b>Positive Controls:</b> WB : 37°C incubated HepG2 cells, rat liver tissue
<b>Species Specificity:</b> human, rat	

## Background Information

ENTPD8 (Ectonucleoside triphosphate diphosphohydrolase 8) is also named as E-NTPDase 8, NTPDase8 and belongs to the GDA1/CD39 NTPase family. NTPDase8 is the canalicular ecto-ATPase/ATPase and is responsible for the main hepatic NTP-Dase activity (PMID:17095758). The estimated molecular mass of expressed human ENTPD8 is 70-85 kDa which is N-glycosylated and after deglycosylation, it has a nearly identical molecular mass, 54 kDa (PMID:16752921;7781224). It has 2 isoforms produced by alternative splicing with the molecular weight of 54 kDa and 49 kDa. This antibody is specific to ENTPD8.

## Storage

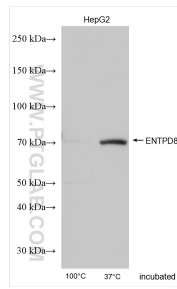
**Storage:**  
Store at -20°C. Stable for one year after shipment.  
**Storage Buffer:**  
PBS with 0.02% sodium azide and 50% glycerol pH 7.3.  
Aliquoting is unnecessary for -20°C storage

\*\*\* 20ul sizes contain 0.1% BSA

For technical support and original validation data for this product please contact:  
T: 1 (888) 4PTGLAB (1-888-478-4522) (toll free in USA), or 1(312) 455-8498 (outside USA)  
E: proteintech@ptglab.com  
W: ptglab.com

This product is exclusively available under Proteintech Group brand and is not available to purchase from any other manufacturer.

## Selected Validation Data



Various lysates were subjected to SDS PAGE followed by western blot with 21010-1-AP (ENTPD8 antibody) at dilution of 1:500 incubated at room temperature for 1.5 hours.