

For Research Use Only

Willin Polyclonal antibody

Catalog Number: 21039-1-AP

1 Publications



Basic Information

Catalog Number:

21039-1-AP

Size:

150ul, Concentration: 300 ug/ml by Nanodrop;

Source:

Rabbit

Isotype:

IgG

Immunogen Catalog Number:

AG15375

GenBank Accession Number:

BC029870

GeneID (NCBI):

122786

UNIPROT ID:

Q96NE9

Full Name:

FERM domain containing 6

Calculated MW:

622 aa, 72 kDa

Observed MW:

72, 70, 30 kDa

Purification Method:

Antigen affinity purification

Recommended Dilutions:

WB: 1:200-1:1000

IHC: 1:20-1:200

FC (Intra): 0.20 ug per 10⁶ cells in a 100 µl suspension

Applications

Tested Applications:

WB, IHC, FC (Intra), ELISA

Cited Applications:

IHC

Species Specificity:

human, mouse, rat

Cited Species:

human

Note-IHC: suggested antigen retrieval with TE buffer pH 9.0; (*) Alternatively, antigen retrieval may be performed with citrate buffer pH 6.0

Positive Controls:

WB : U-251 cells,

IHC : human liver cancer tissue, human liver tissue

FC (Intra) : A431 cells,

Background Information

Willin, also known as FRMD6 or human Expanded (hEx), is a member of the FERM-domain family of cytoskeletal crosslinkers. It is a potent inhibitor of cell proliferation, transformation and modulator of drug sensitivity, suggesting it possesses tumor suppressor properties. Willin is widely expressed in normal tissues. Although willin is found in the cytoplasm and membrane, it localizes to the nuclei of almost all tumors. This antibody was raised against the C-terminal region of human FRMD6 protein and is expected to recognize the endogenous FRMD6.

Notable Publications

Author	Pubmed ID	Journal	Application
Augustin Nzitakera	39394554	BMC Cancer	IHC

Storage

Storage:

Store at -20°C. Stable for one year after shipment.

Storage Buffer:

PBS with 0.02% sodium azide and 50% glycerol, pH7.3

Aliquoting is unnecessary for -20°C storage

*** 20ul sizes contain 0.1% BSA

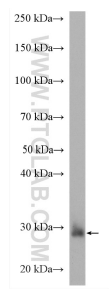
For technical support and original validation data for this product please contact:

T: 1 (888) 4PTGLAB (1-888-478-4522) (toll free in USA), or 1(312) 455-8498 (outside USA)

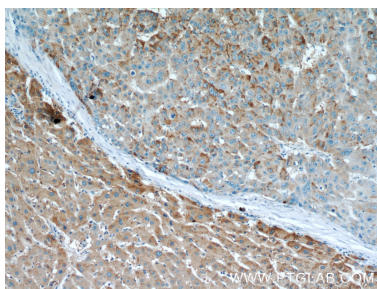
E: proteintech@ptglab.com
W: ptglab.com

This product is exclusively available under Proteintech Group brand and is not available to purchase from any other manufacturer.

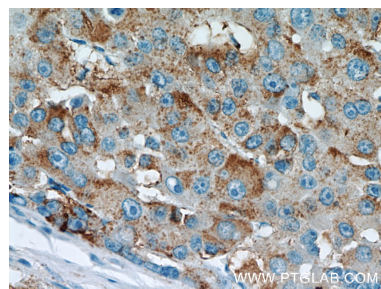
Selected Validation Data



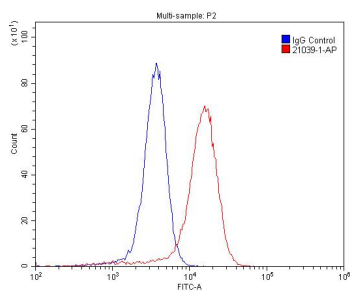
U-251 cells were subjected to SDS PAGE followed by western blot with 21039-1-AP (Willin antibody) at dilution of 1:200 incubated at room temperature for 1.5 hours.



Immunohistochemical analysis of paraffin-embedded human liver cancer using 21039-1-AP (Willin antibody) at dilution of 1:50 (under 10x lens).



Immunohistochemical analysis of paraffin-embedded human liver cancer using 21039-1-AP (Willin antibody) at dilution of 1:50 (under 40x lens).



1X10⁶ A431 cells were stained with .2ug Willin antibody (21039-1-AP, red) and control antibody (blue). Fixed with 4% PFA blocked with 3% BSA (30 min). Alexa Fluor 488-conjugated AffiniPure Goat Anti-Mouse IgG(H+L) with dilution 1:1500.