

GLUT4 Polyclonal antibody

Catalog Number: 21048-1-AP

27 Publications

Basic Information

Catalog Number:

21048-1-AP

Size:

150ul, Concentration: 350 µg/ml by Nanodrop and 187 µg/ml by Bradford method using BSA as the standard;

Source:

Rabbit

Isotype:

IgG

Immunogen Catalog Number:

AG15390

GenBank Accession Number:

BC069615

GeneID (NCBI):

6517

UNIPROT ID:

P14672

Full Name:

solute carrier family 2 (facilitated glucose transporter), member 4

Calculated MW:

509 aa, 55 kDa

Observed MW:

50-55 kDa

Purification Method:

Antigen affinity purification

Recommended Dilutions:

WB 1:200-1:500

IHC 1:50-1:500

Applications

Tested Applications:

IHC, ELISA

Cited Applications:

IHC, IF

Species Specificity:

human, mouse, rat

Cited Species:

human, mouse, rat, *lasiopodomys brandtii*

Note-IHC: suggested antigen retrieval with TE buffer pH 9.0; (*) Alternatively, antigen retrieval may be performed with citrate buffer pH 6.0

Positive Controls:

WB : mouse adipose tissue, mouse brain tissue, rat brain tissue

IHC : mouse skeletal muscle tissue, mouse cerebellum tissue, human heart tissue

Background Information

GLUT4 is a member of GLUT family of transmembrane hexose transporters. It is an INS receptor that mediates INS-stimulated glucose transport in fat and muscle where it is predominantly expressed. In response to INS stimulation, GLUT4 experienced translocation from trans-Golgi network to plasma membrane. The impairment of GLUT4 translocation is associated with diabetes.

Notable Publications

Author	Pubmed ID	Journal	Application
Haoran Li	28990097	Mol Med Rep	
Krishna B Singh	31555797	Carcinogenesis	
Ying Li	34548056	BMC Musculoskelet Disord	

Storage

Storage:

Store at -20°C. Stable for one year after shipment.

Storage Buffer:

PBS with 0.02% sodium azide and 50% glycerol pH 7.3.

Aliquoting is unnecessary for -20°C storage

*** 20ul sizes contain 0.1% BSA

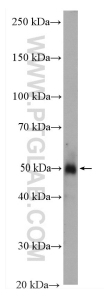
For technical support and original validation data for this product please contact:

T: 1 (888) 4PTGLAB (1-888-478-4522) (toll free in USA), or 1(312) 455-8498 (outside USA)

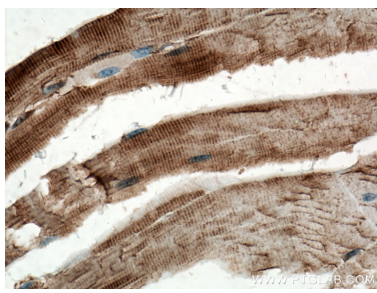
E: proteintech@ptglab.com
W: ptglab.com

This product is exclusively available under Proteintech Group brand and is not available to purchase from any other manufacturer.

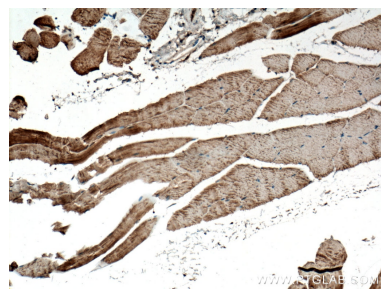
Selected Validation Data



mouse adipose tissue were subjected to SDS PAGE followed by western blot with 21048-1-AP (GLUT4 antibody) at dilution of 1:300 incubated at room temperature for 1.5 hours.



Immunohistochemical analysis of paraffin-embedded mouse skeletal muscle tissue slide using 21048-1-AP (GLUT4 antibody) at dilution of 1:200 (under 40x lens. Heat mediated antigen retrieval with Tris-EDTA buffer (pH 9.0).



Immunohistochemical analysis of paraffin-embedded mouse skeletal muscle tissue slide using 21048-1-AP (GLUT4 antibody) at dilution of 1:200 (under 10x lens. Heat mediated antigen retrieval with Tris-EDTA buffer (pH 9.0).