

For Research Use Only

S1PR2 Polyclonal antibody

Catalog Number: 21180-1-AP

Featured Product

51 Publications



Basic Information

Catalog Number:

21180-1-AP

Size:

150ul, Concentration: 550 ug/ml by Nanodrop;

Source:

Rabbit

Isotype:

IgG

Immunogen Catalog Number:

AG15470

GenBank Accession Number:

BC069598

GeneID (NCBI):

9294

UNIPROT ID:

O95136

Full Name:

sphingosine-1-phosphate receptor 2

Calculated MW:

353 aa, 39 kDa

Observed MW:

40-50 kDa

Purification Method:

Antigen affinity purification

Recommended Dilutions:

WB 1:500-1:2000

IF-P 1:200-1:800

IF-Fro 1:50-1:500

Applications

Tested Applications:

WB, IF-P, IF-Fro, ELISA

Cited Applications:

WB, IHC, IF, IP

Species Specificity:

human

Cited Species:

human, mouse, rat

Positive Controls:

WB : HeLa cells, Daudi cells, HuH-7 cells, MCF-7 cells

IF-P : mouse brain tissue,

IF-Fro : mouse brain tissue,

Background Information

S1PR2 (sphingosine-1-phosphate receptor 2), also known as S1P2 or EDG5, is one of five G-protein-coupled receptors for sphingosine-1-phosphate (S1P), a biologically active metabolic product of sphingolipid (PMID: 18787560). S1P and its receptors have important regulatory functions in normal physiology and disease processes, particularly involving the immune, central nervous, and cardiovascular systems (PMID: 21339489). S1PR2 plays a role in acute vascular inflammation (PMID: 23723450). S1PR2 signaling is implicated in STAT3 activation (PMID: 22606352).

Notable Publications

Author	Pubmed ID	Journal	Application
Yonggui Song	33007392	J Ethnopharmacol	WB
Gennaro Bruno	31477835	Oncogene	WB
K Liu	31610097	Andrology	WB,IHC,IF

Storage

Storage:

Store at -20°C. Stable for one year after shipment.

Storage Buffer:

PBS with 0.02% sodium azide and 50% glycerol, pH7.3

Aliquoting is unnecessary for -20°C storage

*** 20ul sizes contain 0.1% BSA

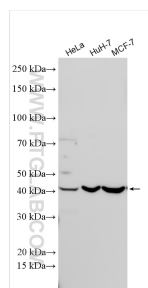
For technical support and original validation data for this product please contact:

T: 1 (888) 4PTGLAB (1-888-478-4522) (toll free in USA), or 1(312) 455-8498 (outside USA)

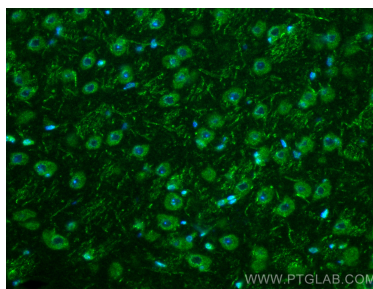
E: proteintech@ptglab.com
W: ptglab.com

This product is exclusively available under Proteintech Group brand and is not available to purchase from any other manufacturer.

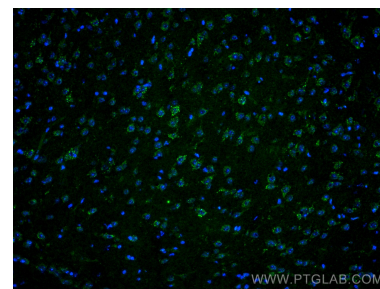
Selected Validation Data



Various lysates were subjected to SDS PAGE followed by western blot with 21180-1-AP (S1PR2 antibody) at dilution of 1:1000 incubated at room temperature for 1.5 hours.



Immunofluorescent analysis of (4% PFA) fixed paraffin-embedded mouse brain tissue using S1PR2 antibody (21180-1-AP) at dilution of 1:400 and CoraLite®488-Conjugated Goat Anti-Rabbit IgG(H+L) (SA00013-2). Heat mediated antigen retrieval with Tris-EDTA buffer (pH 9.0).



Immunofluorescent analysis of (-20°C Ethanol) fixed frozen OCT-embedded mouse brain tissue using 21180-1-AP (S1PR2 antibody) at dilution of 1:200 and CoraLite®488-Conjugated AffiniPure Goat Anti-Rabbit IgG(H+L).