

For Research Use Only

# ATOH1 Polyclonal antibody

Catalog Number: 21215-1-AP

45 Publications



## Basic Information

### Catalog Number:

21215-1-AP

### Size:

150ul, Concentration: 500 ug/ml by Nanodrop;

### Source:

Rabbit

### Isotype:

IgG

### Immunogen Catalog Number:

AG15615

### GenBank Accession Number:

BC069594

### GeneID (NCBI):

474

### UNIPROT ID:

Q92858

### Full Name:

atonal homolog 1 (Drosophila)

### Calculated MW:

354 aa, 38 kDa

### Observed MW:

38-40 kDa

### Purification Method:

Antigen affinity purification

### Recommended Dilutions:

WB 1:5000-1:50000

IHC 1:1000-1:4000

IF/ICC 1:400-1:1600

## Applications

### Tested Applications:

WB, IHC, IF/ICC, ELISA

### Cited Applications:

WB, IHC, IF, ChIP

### Species Specificity:

human, mouse, rat

### Cited Species:

human, mouse, rat, monkey

**Note-IHC: suggested antigen retrieval with TE buffer pH 9.0; (\*) Alternatively, antigen retrieval may be performed with citrate buffer pH 6.0**

### Positive Controls:

**WB** : Neuro-2a cells, HepG2 cells, mouse small intestine tissue, mouse brain tissue, rat brain tissue

**IHC** : human colon cancer tissue,

**IF/ICC** : HepG2 cells,

## Background Information

ATOH1, also named as Protein atonal homolog 1 or BHLHA14, is a 364 amino acid protein, which contains 1 bHLH (basic helix-loop-helix) domain. ATOH1, as a transcriptional regulator in the nucleus activates E box-dependent transcription in collaboration with TCF3/E47, but the activity is completely antagonized by the negative regulator of neurogenesis HES1. ATOH1 plays a role in the differentiation of subsets of neural cells by activating E box-dependent transcription.

## Notable Publications

Author	Pubmed ID	Journal	Application
Haoran Zhang	36147660	Comput Struct Biotechnol J	WB
Tianli Qin	36252002	Proc Natl Acad Sci U S A	IF
Levi Todd	34686336	Cell Rep	IF

## Storage

### Storage:

Store at -20°C. Stable for one year after shipment.

### Storage Buffer:

PBS with 0.02% sodium azide and 50% glycerol

Aliquoting is unnecessary for -20°C storage

\*\*\* 20ul sizes contain 0.1% BSA

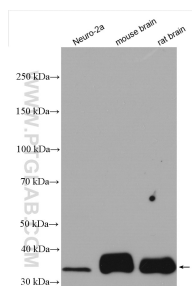
For technical support and original validation data for this product please contact:

T: 1 (888) 4PTGLAB (1-888-478-4522) (toll free in USA), or 1(312) 455-8498 (outside USA)

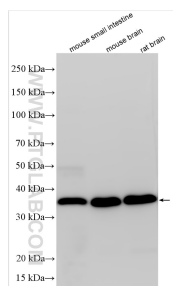
E: [proteintech@ptglab.com](mailto:proteintech@ptglab.com)  
W: [ptglab.com](http://ptglab.com)

This product is exclusively available under Proteintech Group brand and is not available to purchase from any other manufacturer.

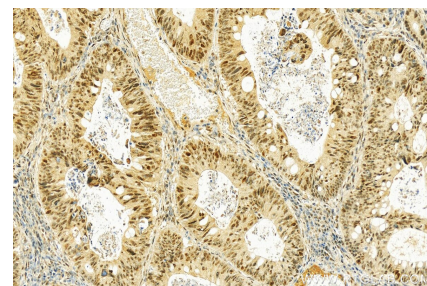
## Selected Validation Data



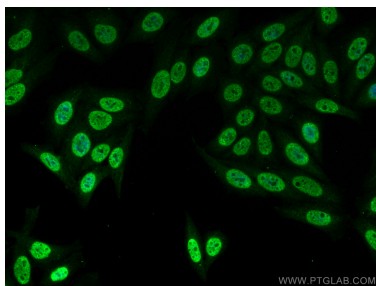
Various lysates were subjected to SDS PAGE followed by western blot with 21215-1-AP (ATOH1 antibody) at dilution of 1:10000 incubated at room temperature for 1.5 hours.



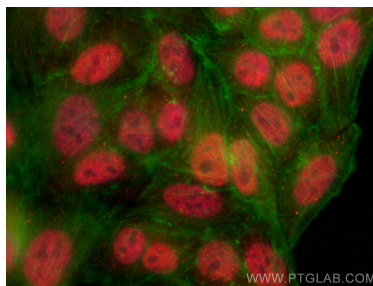
Various lysates were subjected to SDS PAGE followed by western blot with 21215-1-AP (ATOH1 antibody) at dilution of 1:8000 incubated at room temperature for 1.5 hours.



Immunohistochemical analysis of paraffin-embedded Colorectal cancer slide using 21215-1-AP (ATOH1 antibody) at dilution of 1:2000 (under 20x lens). Heat mediated antigen retrieval with Tris-EDTA buffer (pH 9.0).



Immunofluorescent analysis of (4% PFA) fixed HepG2 cells using ATOH1 antibody (21215-1-AP) at dilution of 1:800 and CoraLite®488-Conjugated AffiniPure Goat Anti-Rabbit IgG(H+L).



Immunofluorescent analysis of (4% PFA) fixed HepG2 cells using ATOH1 antibody (21215-1-AP) at dilution of 1:200 and CoraLite®594-Conjugated Goat Anti-Rabbit IgG(H+L), CL488-phalloidin (green).